



LONG TERM MONITORING AND MAINTENANCE REPORT

THOMAS PRINCE SCHOOL
PRINCETON, MASSACHUSETTS

Atlas Project No. 0321663005

Sample Date – August 23, 2024

PREPARED FOR:

Katherine Woodward, PCB Division
United States EPA
5 Post Office Square, Suite 100 (OSRR07-2)
Boston, MA 02109-3912

PREPARED ON BEHALF OF:

Sherry Patch, Town Administrator
Town of Princeton
6 Town Hall Drive
Princeton, MA 01541

PREPARED BY:

Atlas Technical Consultants LLC
10 State Street, Suite 100
Woburn, MA 01801
Phone: (781) 932-9400

September 4, 2024

TABLE OF CONTENTS

1.0 INTRODUCTION.....	1
1.1 Background.....	1
2.0 ANNUAL MONITORING AND MAINTENANCE	3
2.1 August 23, 2024 – 10th Round of Post.....	3
2.2 Required Maintenance.....	4
3.0 COMMUNICATION.....	5

FIGURES:

Figure 1	Site Locus
Figure 2	Room ID Plan

TABLES:

Table 1	2024 – Annual Classroom Wipe Sample Results
---------	---

APPENDICES:

Attachment I	Wipe Sample Laboratory Analytical Certificates – August 2024
Attachment II	Epoxy Coated Surfaces Visual Inspection Logs – August 2024



1.0 INTRODUCTION

On behalf of the Town of Princeton, the purpose of this report is to present the results of annual long-term monitoring and maintenance activities that were conducted at the Thomas Prince School in August 2024. Included within this report are the results and discussions related to the wipe sampling that was performed in August 2024. This report has been provided as public information via the website of the Wachusett Regional School District (WRSD). Refer to the acronym list which follows the Table of Contents for a listing of common acronyms utilized within this report.

1.1 BACKGROUND

The Thomas Prince School is a public elementary school located in the Town of Princeton, Massachusetts. The school building is operated by the WRSD and owned by the Town of Princeton. The school currently serves students in the grades of kindergarten through eight and fulltime/part time educators. The school is occupied for typical school session from late August through June between the hours of 8:30 AM to 3 PM on weekdays. School sponsored “after care programming” occurs for an additional approximate 2.5 hours per day. The school is also used for childhood activities during the summer on a varying schedule. A locus map, showing the location of the school is presented as **Figure 1**. A plan showing the building and locations of rooms within the building is presented as **Figure 2**.

In April 2011, during preparation for a window replacement project being performed as part of Green Repair Program administered under the Massachusetts School Building Authority, analysis of samples of window caulking and window glazing material collected from the school indicated the presence of PCB’s in those building materials. Additional sampling, conducted in June 2011, confirmed the presence of PCB’s in window caulking and also indicated the presence of PCB’s in structural joint caulking as well as masonry substrate materials adjacent to the window caulking. PCB’s in building materials is regulated under the Toxic Substances Control Act (TSCA, 40 CFR, Part 761). Use of PCB’s in building materials is an unauthorized use under this act.

Based on conditional approvals by USEPA, PCB mitigation activities were previously completed at the school. These activities included the removal and/or disposal of *PCB Bulk Product Waste* (window and joint caulking), *PCB Remediation Waste* (building materials and soil), PCB fluorescent light ballasts/stained light housings, *PCB Capacitors* and the encapsulation of identified PCB contaminated porous surfaces (concrete, concrete block and brick) with two layers of an epoxy coating. Per USEPA, the presence of encapsulated PCB contaminated porous surfaces requires long term monitoring and maintenance consisting of surface wipe sampling, indoor air sampling, visual inspection of the encapsulated porous surfaces and maintenance of those surfaces, as required. Multiple rounds of indoor air sampling, surface wipe sampling, building materials sampling and associated analyses for PCB’s have been performed at the school. This data is summarized in a report prepared for the school titled “Long Term Monitoring and Maintenance Report, 2012 – Present”, dated September 30, 2017. Since 2017, near annual reports have been submitted to USEPA and posted on the WRSD website for sampling completed through 2023. In 2024, at the request of the Town of Princeton, the USEPA reduced the sampling frequency required at the school. Wipe sampling of the



exterior coated surfaces and visual inspection of all coated surfaces (exterior and interior) is currently required on an annual basis. Interior wipe samples of coated surfaces is required every two (2) years and indoor air sampling is required every three (3) years.



2.0 ANNUAL MONITORING AND MAINTENANCE

Data obtained during annual monitoring and maintenance activities that have been performed at the Thomas Prince School, as well as other documents related to the PCB assessment and remediation at the school, have been provided to the USEPA via hard copy and/or electronic copy formats and to the general public via posting on the WRSD website at https://www.wrsd.net/plans_documents/pcb_information. Included within this report are the following tables which summarize the analytical data obtained from wipe sampling of epoxy coated surfaces (performed on August 23, 2024)..

- **Table 1** presents a summary of the post-remedial, epoxy coated, *porous surface* wipe sample analytical results obtained in August 2024. The laboratory certificate of analysis associated with the wipe sample results are included in **Attachment I**.

All wipe samples collected as part of these activities were done so in conformance with the methods recommended by USEPA¹. The wipe samples were collected using acetone/hexane doused cotton gauze wipes over a 100 cm² area. The samples were extracted per EPA Method 3540C and analyzed for PCB's via EPA Method 8082. The results are compared to the EPA guideline for the cleanup of PCBs on surfaces in schools of 1 ug/100 cm².

2.1 AUGUST 23, 2024 – 10TH ROUND OF POST “FINAL MITIGATION” SURFACE WIPE SAMPLING

Surface Wipe Samples – August 23, 2024

The 10th round of “post final mitigation” surface wipe samples were collected on August 23, 2024 from the epoxy coated *porous surfaces* located at 1) the exterior substrate surrounding the windows of classrooms 100/102, 104/106, 106/108, 203, 205, and 211. The surface wipe samples were collected and evaluated following procedures as presented in the site-specific Monitoring and Maintenance Implementation Plan dated October 2017. The samples were analyzed by the independent analytical laboratory Alpha Analytical, Inc. (Alpha) dba Pace Analytical of Westborough, MA, per the methods indicated above. The laboratory analytical report is presented in **Attachment I** and the results are summarized in **Table 1**.

The results of the analytical testing shows that all six (6) of the six (6) wipe samples produced results below the laboratory reporting limit of 0.5 ug/100 cm². In addition, PCB were not detected above 0.5 ug/100 cm² in the duplicate sample (collected at 100/102) or the blank. In accordance with the October 2017 MMIP and/or USEPA requirements, since no surface wipe sampling result exceeded 1 ug/100 cm², no additional action is required at this time and future monitoring will continue in accordance with the MMIP and/or subsequent USEPA approvals.

¹ Smith, John H. (1987). Wipe sampling and double wash/rinse cleanup as recommended by the Environmental Protection Agency PCB Spill Cleanup Policy. USEPA. June 23, 1987 (revised and clarified on April 18, 1991) and information presented in 40 CFR 761.123, Definition of Standard wipe test.



2.2 REQUIRED MAINTENANCE

It is the opinion of Atlas that the findings of the confirmatory sampling performed on August 23, 2024 indicate that maintenance of the epoxy encapsulated porous surfaces is not required at this time. This opinion is based on the laboratory analytical results which demonstrate PCB's greater than 1 ug/100cm² were not detected in wipe samples collected from the substrate surfaces and that the visual appearance of the surfaces is good with no significant chipping, cracking or other signs of surficial deterioration of the epoxy coatings.

In accordance with the October 2017 MMIP, a visual inspection of the epoxy encapsulated porous surfaces was performed during the August 2024 sampling event. The inspection was performed to determine if the integrity of the epoxy encapsulate had become unacceptably deteriorated or compromised, thus potentially reducing the continued effectiveness of the coating in limiting potential formation of dust, limiting direct contact to and limiting potential volatilization of the low level of PCB's contained in the underlying substrate material. Observations of conditions of the epoxy coatings are presented on the inspection forms presented in **Attachment II**. The visual aspects considered during the inspections included, but were not limited to, the following:

- Physical condition of the coatings and new caulking (i.e. cracking, flaking, chipping, peeling, thinning, etc.);
- The presence of decorations or other items that are adhered to the coated surfaces; and,
- Other signs of disturbance of the coatings or new caulking.

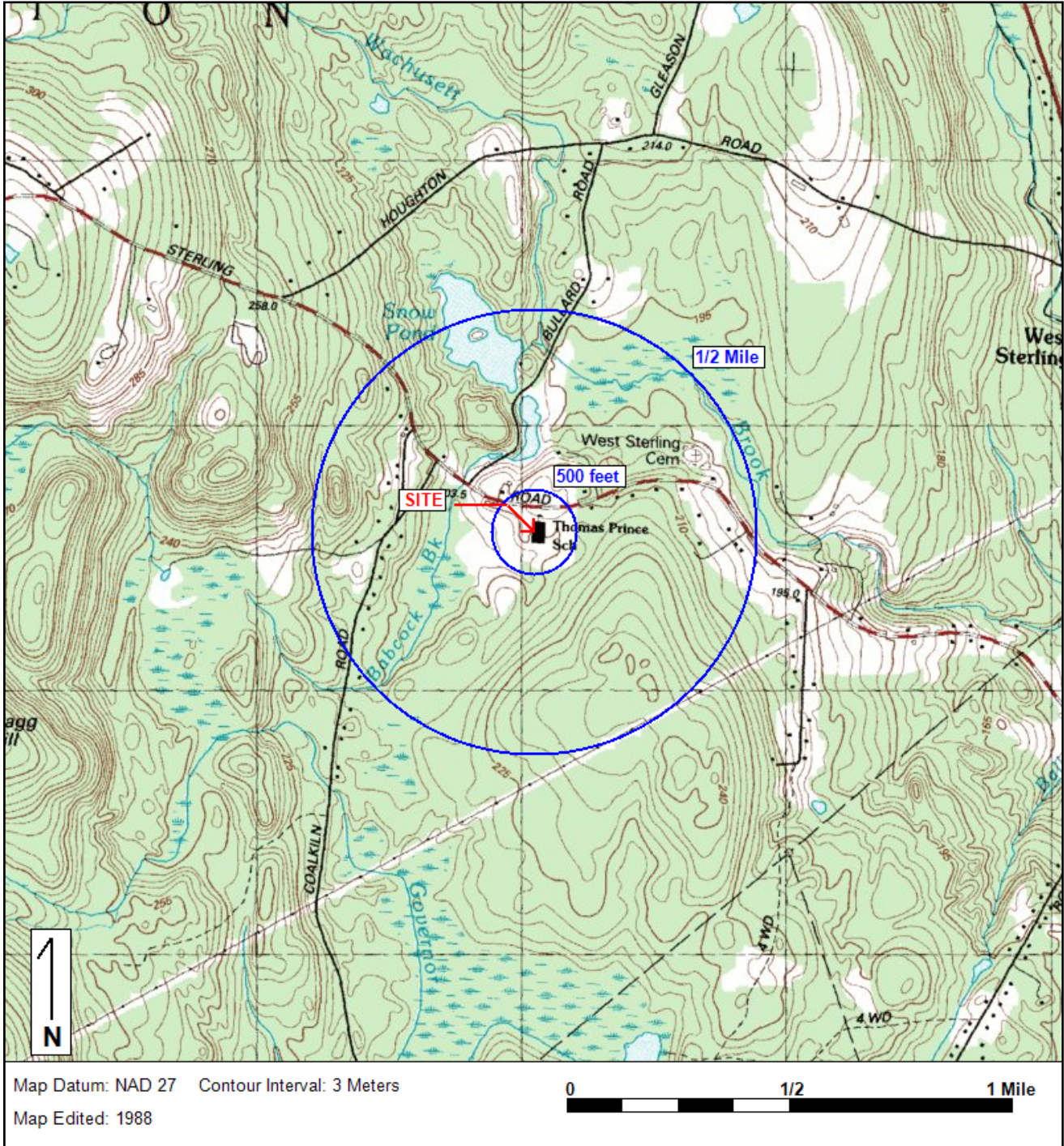


3.0 COMMUNICATION

This report has been posted to the WRSD website under the heading *PCB Information* at https://www.wrsd.net/plans_documents/pcb_information. Links to this information can also be found on the Home Site of the WRSD website under the tab “Plans and Documents” as well as on the webpage specific to the Thomas Prince School under “School Info”.

Thomas Prince School
170 Sterling Street
Princeton, MA

Figure 1: SITE LOCUS

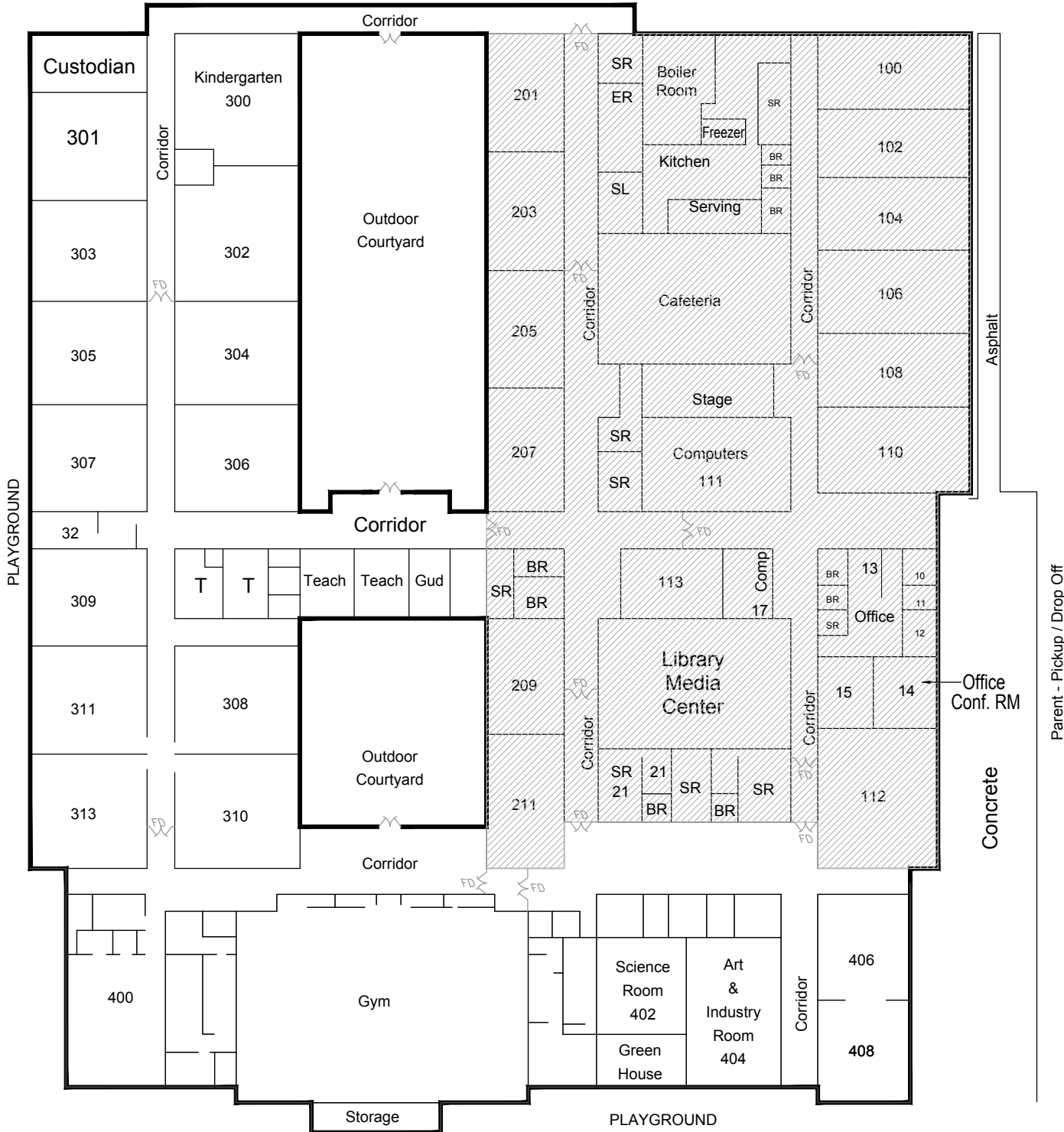


Base Map: U.S. Geological Survey; Quadrangle Location: Sterling, MA

Lat/Lon: 42.4425 NORTH, 71.8438 WEST - UTM Coordinates: 19 266094.53 EAST / 4702820.5 NORTH

Generated By: Rick Starodoj

BUS PICKUP / DROP OFF



PLAYGROUND

Asphalt

Parent - Pickup / Drop Off

Concrete



Legend

- BR - Bathroom
- SR - Storage Room
- ER - Electrical Room
- SL - Staff Lounge
- FD - Fire Door
- Building Constructed 1962
- Un-hatched sections were constructed in 1991

10 State Street * Woburn, MA 01801
Phone: 781-246-8897 Fax: 781-246-8950

PROJECT: **Thomas Prince School**
170 Sterling Road - Route 62
Princeton, Massachusetts

TITLE: **Room ID Plan**

COMPUTER CADFILE : 216630e.dwg			
DRAWN BY:	DESIGNED BY:	CHECKED BY:	APPROVED BY:
RAS	CK	CK	CK
SCALE:	DATE:	JOB NO.:	FIGURE NO.:
NTS	11/12/21	216630	2

SAMPLE ID	Date	Aroclor	Concentration ug/100cm ²	Notes	SAMPLE LOCATION and COMMENTS
100/102 EXT	8/23/2024		<0.5	2	Center, N-most concrete column, N perpendicular face, 6' from ground surface
DUP EXT (100/102)	8/23/2024		<0.5	2	Middle, N-most concrete column, N perpendicular face, 5.5' from ground surface
104/106 EXT	8/23/2024		<0.5	2	S concrete column, N perpendicular face, 5' from ground surface
108/110 EXT	8/23/2024		<0.5	2	Center, S column, parallel face, 3' from ground surface
203 EXT	8/23/2024		<0.5	2	S concrete column, S perpendicular face, 2' from ground surface
205 INT	8/23/2024		<0.5	2	N concrete column, N perpendicular face, 3' from ground surface
211 EXT	8/23/2024		<0.5	2	Center concrete column, S perpendicular face, 4' from ground surface
Blank	8/23/2024		<0.5		

Notes:

All samples collected as hexane wipes over a 100 square centimeter (cm²) area.

All 100 Wing Room Int samples collected from parallel and perpendicular face of block.

All 200 Wing Room Int samples collected from face of block parallel to interior of room.

Regulatory exposure limit for unrestricted use in school is 1 ug/100 cm²

<0.5 = Not Detected above the laboratory reporting limit (RL).

Bold indicates value greater than 1 ug/100 cm²

- 1). Epoxy coating covered by veneer of latex paint.
- 2). Epoxy coating not covered by veneer of latex paint.

ATTACHMENT I



ANALYTICAL REPORT

Lab Number:	L2448304
Client:	Atlas Technical Consultants 10 State Street, Suite 100 Woburn, MA 01801
ATTN:	Charles Klingler
Phone:	(508) 926-1315
Project Name:	TPS
Project Number:	0321663005
Report Date:	08/29/24

The original project report/data package is held by Alpha Analytical. This report/data package is paginated and should be reproduced only in its entirety. Alpha Analytical holds no responsibility for results and/or data that are not consistent with the original.

Certifications & Approvals: MA (M-MA086), NH NELAP (2064), CT (PH-0826), IL (200077), IN (C-MA-03), KY (KY98045), ME (MA00086), MD (348), NJ (MA935), NY (11148), NC (25700/666), OR (MA-1316), PA (68-03671), RI (LAO00065), TX (T104704476), VT (VT-0935), VA (460195), USDA (Permit #525-23-122-91930A1).

Eight Walkup Drive, Westborough, MA 01581-1019
508-898-9220 (Fax) 508-898-9193 800-624-9220 - www.alphalab.com



Project Name: TPS
Project Number: 0321663005

Lab Number: L2448304
Report Date: 08/29/24

Alpha Sample ID	Client ID	Matrix	Sample Location	Collection Date/Time	Receive Date
L2448304-01	100/102 EXT	WIPE	PRINCETON, MA	08/23/24 11:15	08/23/24
L2448304-02	104/106 EXT	WIPE	PRINCETON, MA	08/23/24 11:30	08/23/24
L2448304-03	108/110 EXT	WIPE	PRINCETON, MA	08/23/24 11:40	08/23/24
L2448304-04	203 EXT	WIPE	PRINCETON, MA	08/23/24 11:00	08/23/24
L2448304-05	205 EXT	WIPE	PRINCETON, MA	08/23/24 10:45	08/23/24
L2448304-06	211 EXT	WIPE	PRINCETON, MA	08/23/24 10:30	08/23/24
L2448304-07	DUP EXT	WIPE	PRINCETON, MA	08/23/24 11:48	08/23/24
L2448304-08	BLANK	WIPE	PRINCETON, MA	08/23/24 11:50	08/23/24

Project Name: TPS
Project Number: 0321663005

Lab Number: L2448304
Report Date: 08/29/24

Case Narrative

The samples were received in accordance with the Chain of Custody and no significant deviations were encountered during the preparation or analysis unless otherwise noted. Sample Receipt, Container Information, and the Chain of Custody are located at the back of the report.

Results contained within this report relate only to the samples submitted under this Alpha Lab Number and meet NELAP requirements for all NELAP accredited parameters unless otherwise noted in the following narrative. The data presented in this report is organized by parameter (i.e. VOC, SVOC, etc.). Sample specific Quality Control data (i.e. Surrogate Spike Recovery) is reported at the end of the target analyte list for each individual sample, followed by the Laboratory Batch Quality Control at the end of each parameter. Tentatively Identified Compounds (TICs), if requested, are reported for compounds identified to be present and are not part of the method/program Target Compound List, even if only a subset of the TCL are being reported. If a sample was re-analyzed or re-extracted due to a required quality control corrective action and if both sets of data are reported, the Laboratory ID of the re-analysis or re-extraction is designated with an "R" or "RE", respectively.

When multiple Batch Quality Control elements are reported (e.g. more than one LCS), the associated samples for each element are noted in the grey shaded header line of each data table. Any Laboratory Batch, Sample Specific % recovery or RPD value that is outside the listed Acceptance Criteria is bolded in the report. In reference to questions H (CAM) or 4 (RCP) when "NO" is checked, the performance criteria for CAM and RCP methods allow for some quality control failures to occur and still be within method compliance. In these instances, the specific failure is not narrated but noted in the associated QC Outlier Summary Report, located directly after the Case Narrative. QC information is also incorporated in the Data Usability Assessment table (Format 11) of our Data Merger tool, where it can be reviewed in conjunction with the sample result, associated regulatory criteria and any associated data usability implications.


Soil/sediments and solids are reported on a dry weight basis unless otherwise noted. Tissues are reported "as received" or on a wet weight basis, unless otherwise noted. Definitions of all data qualifiers and acronyms used in this report are provided in the Glossary located at the back of the report.

HOLD POLICY - For samples submitted on hold, Alpha's policy is to hold samples (with the exception of Air canisters) free of charge for 21 calendar days from the date the project is completed. After 21 calendar days, we will dispose of all samples submitted including those put on hold unless you have contacted your Alpha Project Manager and made arrangements for Alpha to continue to hold the samples. Air canisters will be disposed after 3 business days from the date the project is completed.

Please contact Project Management at 800-624-9220 with any questions.

I, the undersigned, attest under the pains and penalties of perjury that, to the best of my knowledge and belief and based upon my personal inquiry of those responsible for providing the information contained in this analytical report, such information is accurate and complete. This certificate of analysis is not complete unless this page accompanies any and all pages of this report.

Authorized Signature:

 Ashaley Moynihan

Title: Technical Director/Representative

Date: 08/29/24

ORGANICS

PCBS

Project Name: TPS
Project Number: 0321663005

Lab Number: L2448304
Report Date: 08/29/24

SAMPLE RESULTS

Lab ID: L2448304-01
 Client ID: 100/102 EXT
 Sample Location: PRINCETON, MA

Date Collected: 08/23/24 11:15
 Date Received: 08/23/24
 Field Prep: Not Specified

Sample Depth:

Matrix: Wipe
 Analytical Method: 1,8082A
 Analytical Date: 08/28/24 01:20
 Analyst: MHG

Extraction Method: EPA 3540C
 Extraction Date: 08/26/24 10:05
 Cleanup Method: EPA 3665A
 Cleanup Date: 08/27/24
 Cleanup Method: EPA 3660B
 Cleanup Date: 08/28/24

Parameter	Result	Qualifier	Units	RL	MDL	Dilution Factor	Column
Polychlorinated Biphenyls by GC - Westborough Lab							
Aroclor 1016	ND		ug Abs	0.500	--	1	A
Aroclor 1221	ND		ug Abs	0.500	--	1	A
Aroclor 1232	ND		ug Abs	0.500	--	1	A
Aroclor 1242	ND		ug Abs	0.500	--	1	A
Aroclor 1248	ND		ug Abs	0.500	--	1	A
Aroclor 1254	ND		ug Abs	0.500	--	1	A
Aroclor 1260	ND		ug Abs	0.500	--	1	A
Aroclor 1262	ND		ug Abs	0.500	--	1	A
Aroclor 1268	ND		ug Abs	0.500	--	1	A
PCBs, Total	ND		ug Abs	0.500	--	1	A

Surrogate	% Recovery	Qualifier	Acceptance Criteria	Column
2,4,5,6-Tetrachloro-m-xylene	65		30-150	A
Decachlorobiphenyl	79		30-150	A
2,4,5,6-Tetrachloro-m-xylene	68		30-150	B
Decachlorobiphenyl	74		30-150	B

Project Name: TPS
Project Number: 0321663005

Lab Number: L2448304
Report Date: 08/29/24

SAMPLE RESULTS

Lab ID: L2448304-02
 Client ID: 104/106 EXT
 Sample Location: PRINCETON, MA

Date Collected: 08/23/24 11:30
 Date Received: 08/23/24
 Field Prep: Not Specified

Sample Depth:

Matrix: Wipe
 Analytical Method: 1,8082A
 Analytical Date: 08/28/24 02:07
 Analyst: MHG

Extraction Method: EPA 3540C
 Extraction Date: 08/26/24 10:05
 Cleanup Method: EPA 3665A
 Cleanup Date: 08/27/24
 Cleanup Method: EPA 3660B
 Cleanup Date: 08/28/24

Parameter	Result	Qualifier	Units	RL	MDL	Dilution Factor	Column
Polychlorinated Biphenyls by GC - Westborough Lab							
Aroclor 1016	ND		ug Abs	0.500	--	1	A
Aroclor 1221	ND		ug Abs	0.500	--	1	A
Aroclor 1232	ND		ug Abs	0.500	--	1	A
Aroclor 1242	ND		ug Abs	0.500	--	1	A
Aroclor 1248	ND		ug Abs	0.500	--	1	A
Aroclor 1254	ND		ug Abs	0.500	--	1	A
Aroclor 1260	ND		ug Abs	0.500	--	1	A
Aroclor 1262	ND		ug Abs	0.500	--	1	A
Aroclor 1268	ND		ug Abs	0.500	--	1	A
PCBs, Total	ND		ug Abs	0.500	--	1	A

Surrogate	% Recovery	Qualifier	Acceptance Criteria	Column
2,4,5,6-Tetrachloro-m-xylene	63		30-150	A
Decachlorobiphenyl	81		30-150	A
2,4,5,6-Tetrachloro-m-xylene	66		30-150	B
Decachlorobiphenyl	78		30-150	B

Project Name: TPS
Project Number: 0321663005

Lab Number: L2448304
Report Date: 08/29/24

SAMPLE RESULTS

Lab ID: L2448304-03
 Client ID: 108/110 EXT
 Sample Location: PRINCETON, MA

Date Collected: 08/23/24 11:40
 Date Received: 08/23/24
 Field Prep: Not Specified

Sample Depth:

Matrix: Wipe
 Analytical Method: 1,8082A
 Analytical Date: 08/28/24 02:15
 Analyst: MHG

Extraction Method: EPA 3540C
 Extraction Date: 08/26/24 10:05
 Cleanup Method: EPA 3665A
 Cleanup Date: 08/27/24
 Cleanup Method: EPA 3660B
 Cleanup Date: 08/28/24

Parameter	Result	Qualifier	Units	RL	MDL	Dilution Factor	Column
Polychlorinated Biphenyls by GC - Westborough Lab							
Aroclor 1016	ND		ug Abs	0.500	--	1	A
Aroclor 1221	ND		ug Abs	0.500	--	1	A
Aroclor 1232	ND		ug Abs	0.500	--	1	A
Aroclor 1242	ND		ug Abs	0.500	--	1	A
Aroclor 1248	ND		ug Abs	0.500	--	1	A
Aroclor 1254	ND		ug Abs	0.500	--	1	A
Aroclor 1260	ND		ug Abs	0.500	--	1	A
Aroclor 1262	ND		ug Abs	0.500	--	1	A
Aroclor 1268	ND		ug Abs	0.500	--	1	A
PCBs, Total	ND		ug Abs	0.500	--	1	A

Surrogate	% Recovery	Qualifier	Acceptance Criteria	Column
2,4,5,6-Tetrachloro-m-xylene	61		30-150	A
Decachlorobiphenyl	76		30-150	A
2,4,5,6-Tetrachloro-m-xylene	64		30-150	B
Decachlorobiphenyl	74		30-150	B

Project Name: TPS
Project Number: 0321663005

Lab Number: L2448304
Report Date: 08/29/24

SAMPLE RESULTS

Lab ID: L2448304-04
 Client ID: 203 EXT
 Sample Location: PRINCETON, MA

Date Collected: 08/23/24 11:00
 Date Received: 08/23/24
 Field Prep: Not Specified

Sample Depth:

Matrix: Wipe
 Analytical Method: 1,8082A
 Analytical Date: 08/28/24 01:28
 Analyst: MHG

Extraction Method: EPA 3540C
 Extraction Date: 08/26/24 10:05
 Cleanup Method: EPA 3665A
 Cleanup Date: 08/27/24
 Cleanup Method: EPA 3660B
 Cleanup Date: 08/28/24

Parameter	Result	Qualifier	Units	RL	MDL	Dilution Factor	Column
Polychlorinated Biphenyls by GC - Westborough Lab							
Aroclor 1016	ND		ug Abs	0.500	--	1	A
Aroclor 1221	ND		ug Abs	0.500	--	1	A
Aroclor 1232	ND		ug Abs	0.500	--	1	A
Aroclor 1242	ND		ug Abs	0.500	--	1	A
Aroclor 1248	ND		ug Abs	0.500	--	1	A
Aroclor 1254	ND		ug Abs	0.500	--	1	A
Aroclor 1260	ND		ug Abs	0.500	--	1	A
Aroclor 1262	ND		ug Abs	0.500	--	1	A
Aroclor 1268	ND		ug Abs	0.500	--	1	A
PCBs, Total	ND		ug Abs	0.500	--	1	A

Surrogate	% Recovery	Qualifier	Acceptance Criteria	Column
2,4,5,6-Tetrachloro-m-xylene	66		30-150	A
Decachlorobiphenyl	85		30-150	A
2,4,5,6-Tetrachloro-m-xylene	69		30-150	B
Decachlorobiphenyl	80		30-150	B

Project Name: TPS
Project Number: 0321663005

Lab Number: L2448304
Report Date: 08/29/24

SAMPLE RESULTS

Lab ID: L2448304-05
 Client ID: 205 EXT
 Sample Location: PRINCETON, MA

Date Collected: 08/23/24 10:45
 Date Received: 08/23/24
 Field Prep: Not Specified

Sample Depth:

Matrix: Wipe
 Analytical Method: 1,8082A
 Analytical Date: 08/28/24 01:36
 Analyst: MHG

Extraction Method: EPA 3540C
 Extraction Date: 08/26/24 10:05
 Cleanup Method: EPA 3665A
 Cleanup Date: 08/27/24
 Cleanup Method: EPA 3660B
 Cleanup Date: 08/28/24

Parameter	Result	Qualifier	Units	RL	MDL	Dilution Factor	Column
Polychlorinated Biphenyls by GC - Westborough Lab							
Aroclor 1016	ND		ug Abs	0.500	--	1	A
Aroclor 1221	ND		ug Abs	0.500	--	1	A
Aroclor 1232	ND		ug Abs	0.500	--	1	A
Aroclor 1242	ND		ug Abs	0.500	--	1	A
Aroclor 1248	ND		ug Abs	0.500	--	1	A
Aroclor 1254	ND		ug Abs	0.500	--	1	A
Aroclor 1260	ND		ug Abs	0.500	--	1	A
Aroclor 1262	ND		ug Abs	0.500	--	1	A
Aroclor 1268	ND		ug Abs	0.500	--	1	A
PCBs, Total	ND		ug Abs	0.500	--	1	A

Surrogate	% Recovery	Qualifier	Acceptance Criteria	Column
2,4,5,6-Tetrachloro-m-xylene	62		30-150	A
Decachlorobiphenyl	73		30-150	A
2,4,5,6-Tetrachloro-m-xylene	65		30-150	B
Decachlorobiphenyl	70		30-150	B

Project Name: TPS
Project Number: 0321663005

Lab Number: L2448304
Report Date: 08/29/24

SAMPLE RESULTS

Lab ID: L2448304-06
 Client ID: 211 EXT
 Sample Location: PRINCETON, MA

Date Collected: 08/23/24 10:30
 Date Received: 08/23/24
 Field Prep: Not Specified

Sample Depth:

Matrix: Wipe
 Analytical Method: 1,8082A
 Analytical Date: 08/28/24 01:44
 Analyst: MHG

Extraction Method: EPA 3540C
 Extraction Date: 08/26/24 10:05
 Cleanup Method: EPA 3665A
 Cleanup Date: 08/27/24
 Cleanup Method: EPA 3660B
 Cleanup Date: 08/28/24

Parameter	Result	Qualifier	Units	RL	MDL	Dilution Factor	Column
Polychlorinated Biphenyls by GC - Westborough Lab							
Aroclor 1016	ND		ug Abs	0.500	--	1	A
Aroclor 1221	ND		ug Abs	0.500	--	1	A
Aroclor 1232	ND		ug Abs	0.500	--	1	A
Aroclor 1242	ND		ug Abs	0.500	--	1	A
Aroclor 1248	ND		ug Abs	0.500	--	1	A
Aroclor 1254	ND		ug Abs	0.500	--	1	A
Aroclor 1260	ND		ug Abs	0.500	--	1	A
Aroclor 1262	ND		ug Abs	0.500	--	1	A
Aroclor 1268	ND		ug Abs	0.500	--	1	A
PCBs, Total	ND		ug Abs	0.500	--	1	A

Surrogate	% Recovery	Qualifier	Acceptance Criteria	Column
2,4,5,6-Tetrachloro-m-xylene	58		30-150	A
Decachlorobiphenyl	75		30-150	A
2,4,5,6-Tetrachloro-m-xylene	62		30-150	B
Decachlorobiphenyl	73		30-150	B

Project Name: TPS
Project Number: 0321663005

Lab Number: L2448304
Report Date: 08/29/24

SAMPLE RESULTS

Lab ID: L2448304-07
 Client ID: DUP EXT
 Sample Location: PRINCETON, MA

Date Collected: 08/23/24 11:48
 Date Received: 08/23/24
 Field Prep: Not Specified

Sample Depth:

Matrix: Wipe
 Analytical Method: 1,8082A
 Analytical Date: 08/28/24 01:51
 Analyst: MHG

Extraction Method: EPA 3540C
 Extraction Date: 08/26/24 10:05
 Cleanup Method: EPA 3665A
 Cleanup Date: 08/27/24
 Cleanup Method: EPA 3660B
 Cleanup Date: 08/28/24

Parameter	Result	Qualifier	Units	RL	MDL	Dilution Factor	Column
Polychlorinated Biphenyls by GC - Westborough Lab							
Aroclor 1016	ND		ug Abs	0.500	--	1	A
Aroclor 1221	ND		ug Abs	0.500	--	1	A
Aroclor 1232	ND		ug Abs	0.500	--	1	A
Aroclor 1242	ND		ug Abs	0.500	--	1	A
Aroclor 1248	ND		ug Abs	0.500	--	1	A
Aroclor 1254	ND		ug Abs	0.500	--	1	A
Aroclor 1260	ND		ug Abs	0.500	--	1	A
Aroclor 1262	ND		ug Abs	0.500	--	1	A
Aroclor 1268	ND		ug Abs	0.500	--	1	A
PCBs, Total	ND		ug Abs	0.500	--	1	A

Surrogate	% Recovery	Qualifier	Acceptance Criteria	Column
2,4,5,6-Tetrachloro-m-xylene	59		30-150	A
Decachlorobiphenyl	71		30-150	A
2,4,5,6-Tetrachloro-m-xylene	62		30-150	B
Decachlorobiphenyl	69		30-150	B

Project Name: TPS
Project Number: 0321663005

Lab Number: L2448304
Report Date: 08/29/24

SAMPLE RESULTS

Lab ID: L2448304-08
 Client ID: BLANK
 Sample Location: PRINCETON, MA

Date Collected: 08/23/24 11:50
 Date Received: 08/23/24
 Field Prep: Not Specified

Sample Depth:

Matrix: Wipe
 Analytical Method: 1,8082A
 Analytical Date: 08/28/24 01:59
 Analyst: MHG

Extraction Method: EPA 3540C
 Extraction Date: 08/26/24 10:05
 Cleanup Method: EPA 3665A
 Cleanup Date: 08/27/24
 Cleanup Method: EPA 3660B
 Cleanup Date: 08/28/24

Parameter	Result	Qualifier	Units	RL	MDL	Dilution Factor	Column
Polychlorinated Biphenyls by GC - Westborough Lab							
Aroclor 1016	ND		ug Abs	0.500	--	1	A
Aroclor 1221	ND		ug Abs	0.500	--	1	A
Aroclor 1232	ND		ug Abs	0.500	--	1	A
Aroclor 1242	ND		ug Abs	0.500	--	1	A
Aroclor 1248	ND		ug Abs	0.500	--	1	A
Aroclor 1254	ND		ug Abs	0.500	--	1	A
Aroclor 1260	ND		ug Abs	0.500	--	1	A
Aroclor 1262	ND		ug Abs	0.500	--	1	A
Aroclor 1268	ND		ug Abs	0.500	--	1	A
PCBs, Total	ND		ug Abs	0.500	--	1	A

Surrogate	% Recovery	Qualifier	Acceptance Criteria	Column
2,4,5,6-Tetrachloro-m-xylene	70		30-150	A
Decachlorobiphenyl	83		30-150	A
2,4,5,6-Tetrachloro-m-xylene	75		30-150	B
Decachlorobiphenyl	81		30-150	B

Project Name: TPS
Project Number: 0321663005

Lab Number: L2448304
Report Date: 08/29/24

**Method Blank Analysis
Batch Quality Control**

Analytical Method: 1,8082A
Analytical Date: 08/28/24 00:56
Analyst: MHG

Extraction Method: EPA 3540C
Extraction Date: 08/26/24 10:05
Cleanup Method: EPA 3665A
Cleanup Date: 08/27/24
Cleanup Method: EPA 3660B
Cleanup Date: 08/28/24

Parameter	Result	Qualifier	Units	RL	MDL	Column
Polychlorinated Biphenyls by GC - Westborough Lab for sample(s): 01-08 Batch: WG1963805-1						
Aroclor 1016	ND		ug Abs	0.500	--	A
Aroclor 1221	ND		ug Abs	0.500	--	A
Aroclor 1232	ND		ug Abs	0.500	--	A
Aroclor 1242	ND		ug Abs	0.500	--	A
Aroclor 1248	ND		ug Abs	0.500	--	A
Aroclor 1254	ND		ug Abs	0.500	--	A
Aroclor 1260	ND		ug Abs	0.500	--	A
Aroclor 1262	ND		ug Abs	0.500	--	A
Aroclor 1268	ND		ug Abs	0.500	--	A
PCBs, Total	ND		ug Abs	0.500	--	A

Surrogate	%Recovery	Qualifier	Acceptance Criteria	Column
2,4,5,6-Tetrachloro-m-xylene	63		30-150	A
Decachlorobiphenyl	75		30-150	A
2,4,5,6-Tetrachloro-m-xylene	69		30-150	B
Decachlorobiphenyl	74		30-150	B

Lab Control Sample Analysis Batch Quality Control

Project Name: TPS
Project Number: 0321663005

Lab Number: L2448304
Report Date: 08/29/24

Parameter	LCS %Recovery	Qual	LCSD %Recovery	Qual	%Recovery Limits	RPD	Qual	RPD Limits	Column
Polychlorinated Biphenyls by GC - Westborough Lab Associated sample(s): 01-08 Batch: WG1963805-2 WG1963805-3									
Aroclor 1016	65		73		40-140	11		50	A
Aroclor 1260	65		71		40-140	9		50	A

Surrogate	LCS %Recovery	Qual	LCSD %Recovery	Qual	Acceptance Criteria	Column
2,4,5,6-Tetrachloro-m-xylene	62		66		30-150	A
Decachlorobiphenyl	79		84		30-150	A
2,4,5,6-Tetrachloro-m-xylene	67		71		30-150	B
Decachlorobiphenyl	75		81		30-150	B

Project Name: TPS**Lab Number:** L2448304**Project Number:** 0321663005**Report Date:** 08/29/24**Sample Receipt and Container Information**

Were project specific reporting limits specified?

YES

Cooler Information

Cooler	Custody Seal
A	Absent

Container Information

Container ID	Container Type	Cooler	Initial pH	Final pH	Temp deg C	Pres	Seal	Frozen Date/Time	Analysis(*)
L2448304-01A	Glass 120ml/4oz w/1:4 Acetone:Hexane	A	NA		4.5	Y	Absent		PCB-8082-3540C(365)
L2448304-02A	Glass 120ml/4oz w/1:4 Acetone:Hexane	A	NA		4.5	Y	Absent		PCB-8082-3540C(365)
L2448304-03A	Glass 120ml/4oz w/1:4 Acetone:Hexane	A	NA		4.5	Y	Absent		PCB-8082-3540C(365)
L2448304-04A	Glass 120ml/4oz w/1:4 Acetone:Hexane	A	NA		4.5	Y	Absent		PCB-8082-3540C(365)
L2448304-05A	Glass 120ml/4oz w/1:4 Acetone:Hexane	A	NA		4.5	Y	Absent		PCB-8082-3540C(365)
L2448304-06A	Glass 120ml/4oz w/1:4 Acetone:Hexane	A	NA		4.5	Y	Absent		PCB-8082-3540C(365)
L2448304-07A	Glass 120ml/4oz w/1:4 Acetone:Hexane	A	NA		4.5	Y	Absent		PCB-8082-3540C(365)
L2448304-08A	Glass 120ml/4oz w/1:4 Acetone:Hexane	A	NA		4.5	Y	Absent		PCB-8082-3540C(365)

Project Name: TPS
Project Number: 0321663005

Lab Number: L2448304
Report Date: 08/29/24

GLOSSARY

Acronyms

DL	- Detection Limit: This value represents the level to which target analyte concentrations are reported as estimated values, when those target analyte concentrations are quantified below the limit of quantitation (LOQ). The DL includes any adjustments from dilutions, concentrations or moisture content, where applicable. (DoD report formats only.)
EDL	- Estimated Detection Limit: This value represents the level to which target analyte concentrations are reported as estimated values, when those target analyte concentrations are quantified below the reporting limit (RL). The EDL includes any adjustments from dilutions, concentrations or moisture content, where applicable. The use of EDLs is specific to the analysis of PAHs using Solid-Phase Microextraction (SPME).
EMPC	- Estimated Maximum Possible Concentration: The concentration that results from the signal present at the retention time of an analyte when the ions meet all of the identification criteria except the ion abundance ratio criteria. An EMPC is a worst-case estimate of the concentration.
EPA	- Environmental Protection Agency.
LCS	- Laboratory Control Sample: A sample matrix, free from the analytes of interest, spiked with verified known amounts of analytes or a material containing known and verified amounts of analytes.
LCSD	- Laboratory Control Sample Duplicate: Refer to LCS.
LFB	- Laboratory Fortified Blank: A sample matrix, free from the analytes of interest, spiked with verified known amounts of analytes or a material containing known and verified amounts of analytes.
LOD	- Limit of Detection: This value represents the level to which a target analyte can reliably be detected for a specific analyte in a specific matrix by a specific method. The LOD includes any adjustments from dilutions, concentrations or moisture content, where applicable. (DoD report formats only.)
LOQ	- Limit of Quantitation: The value at which an instrument can accurately measure an analyte at a specific concentration. The LOQ includes any adjustments from dilutions, concentrations or moisture content, where applicable. (DoD report formats only.) Limit of Quantitation: The value at which an instrument can accurately measure an analyte at a specific concentration. The LOQ includes any adjustments from dilutions, concentrations or moisture content, where applicable. (DoD report formats only.)
MDL	- Method Detection Limit: This value represents the level to which target analyte concentrations are reported as estimated values, when those target analyte concentrations are quantified below the reporting limit (RL). The MDL includes any adjustments from dilutions, concentrations or moisture content, where applicable.
MS	- Matrix Spike Sample: A sample prepared by adding a known mass of target analyte to a specified amount of matrix sample for which an independent estimate of target analyte concentration is available. For Method 332.0, the spike recovery is calculated using the native concentration, including estimated values.
MSD	- Matrix Spike Sample Duplicate: Refer to MS.
NA	- Not Applicable.
NC	- Not Calculated: Term is utilized when one or more of the results utilized in the calculation are non-detect at the parameter's reporting unit.
NDPA/DPA	- N-Nitrosodiphenylamine/Diphenylamine.
NI	- Not Ignitable.
NP	- Non-Plastic: Term is utilized for the analysis of Atterberg Limits in soil.
NR	- No Results: Term is utilized when 'No Target Compounds Requested' is reported for the analysis of Volatile or Semivolatile Organic TIC only requests.
RL	- Reporting Limit: The value at which an instrument can accurately measure an analyte at a specific concentration. The RL includes any adjustments from dilutions, concentrations or moisture content, where applicable.
RPD	- Relative Percent Difference: The results from matrix and/or matrix spike duplicates are primarily designed to assess the precision of analytical results in a given matrix and are expressed as relative percent difference (RPD). Values which are less than five times the reporting limit for any individual parameter are evaluated by utilizing the absolute difference between the values; although the RPD value will be provided in the report.
SRM	- Standard Reference Material: A reference sample of a known or certified value that is of the same or similar matrix as the associated field samples.
STLP	- Semi-dynamic Tank Leaching Procedure per EPA Method 1315.
TEF	- Toxic Equivalency Factors: The values assigned to each dioxin and furan to evaluate their toxicity relative to 2,3,7,8-TCDD.
TEQ	- Toxic Equivalent: The measure of a sample's toxicity derived by multiplying each dioxin and furan by its corresponding TEF and then summing the resulting values.
TIC	- Tentatively Identified Compound: A compound that has been identified to be present and is not part of the target compound list (TCL) for the method and/or program. All TICs are qualitatively identified and reported as estimated concentrations.

Report Format: Data Usability Report



Project Name: TPS
Project Number: 0321663005

Lab Number: L2448304
Report Date: 08/29/24

Footnotes

- 1 - The reference for this analyte should be considered modified since this analyte is absent from the target analyte list of the original method.

Terms

Analytical Method: Both the document from which the method originates and the analytical reference method. (Example: EPA 8260B is shown as 1,8260B.) The codes for the reference method documents are provided in the References section of the Addendum.

Chlordane: The target compound Chlordane (CAS No. 57-74-9) is reported for GC ECD analyses. Per EPA, this compound "refers to a mixture of chlordane isomers, other chlorinated hydrocarbons and numerous other components." (Reference: USEPA Toxicological Review of Chlordane, In Support of Summary Information on the Integrated Risk Information System (IRIS), December 1997.)

Difference: With respect to Total Oxidizable Precursor (TOP) Assay analysis, the difference is defined as the Post-Treatment value minus the Pre-Treatment value.

Final pH: As it pertains to Sample Receipt & Container Information section of the report, Final pH reflects pH of container determined after adjustment at the laboratory, if applicable. If no adjustment required, value reflects Initial pH.

Frozen Date/Time: With respect to Volatile Organics in soil, Frozen Date/Time reflects the date/time at which associated Reagent Water-preserved vials were initially frozen. Note: If frozen date/time is beyond 48 hours from sample collection, value will be reflected in 'bold'.

Gasoline Range Organics (GRO): Gasoline Range Organics (GRO) results include all chromatographic peaks eluting from Methyl tert butyl ether through Naphthalene, with the exception of GRO analysis in support of State of Ohio programs, which includes all chromatographic peaks eluting from Hexane through Dodecane.

Initial pH: As it pertains to Sample Receipt & Container Information section of the report, Initial pH reflects pH of container determined upon receipt, if applicable.

PAH Total: With respect to Alkylated PAH analyses, the 'PAHs, Total' result is defined as the summation of results for all or a subset of the following compounds: Naphthalene, C1-C4 Naphthalenes, 2-Methylnaphthalene, 1-Methylnaphthalene, Biphenyl, Acenaphthylene, Acenaphthene, Fluorene, C1-C3 Fluorenes, Phenanthrene, C1-C4 Phenanthrenes/Anthracenes, Anthracene, Fluoranthene, Pyrene, C1-C4 Fluoranthenes/Pyrenes, Benz(a)anthracene, Chrysene, C1-C4 Chrysenes, Benzo(b)fluoranthene, Benzo(j)+(k)fluoranthene, Benzo(e)pyrene, Benzo(a)pyrene, Perylene, Indeno(1,2,3-cd)pyrene, Dibenz(ah)+(ac)anthracene, Benzo(g,h,i)perylene. If a 'Total' result is requested, the results of its individual components will also be reported.

PFAS Total: With respect to PFAS analyses, the 'PFAS, Total (5)' result is defined as the summation of results for: PFHpA, PFHxS, PFOA, PFNA and PFOS. In addition, the 'PFAS, Total (6)' result is defined as the summation of results for: PFHpA, PFHxS, PFOA, PFNA, PFDA and PFOS. For MassDEP DW compliance analysis only, the 'PFAS, Total (6)' result is defined as the summation of results at or above the RL. Note: If a 'Total' result is requested, the results of its individual components will also be reported.

Total: With respect to Organic analyses, a 'Total' result is defined as the summation of results for individual isomers or Aroclors. If a 'Total' result is requested, the results of its individual components will also be reported. This is applicable to 'Total' results for methods 8260, 8081 and 8082.

Data Qualifiers

- A** - Spectra identified as "Aldol Condensates" are byproducts of the extraction/concentration procedures when acetone is introduced in the process.
- B** - The analyte was detected above the reporting limit in the associated method blank. Flag only applies to associated field samples that have detectable concentrations of the analyte at less than ten times (10x) the concentration found in the blank. For MCP-related projects, flag only applies to associated field samples that have detectable concentrations of the analyte at less than ten times (10x) the concentration found in the blank. For DOD-related projects, flag only applies to associated field samples that have detectable concentrations of the analyte at less than ten times (10x) the concentration found in the blank AND the analyte was detected above one-half the reporting limit (or above the reporting limit for common lab contaminants) in the associated method blank. For NJ-Air-related projects, flag only applies to associated field samples that have detectable concentrations of the analyte above the reporting limit. For NJ-related projects (excluding Air), flag only applies to associated field samples that have detectable concentrations of the analyte, which was detected above the reporting limit in the associated method blank or above five times the reporting limit for common lab contaminants (Phthalates, Acetone, Methylene Chloride, 2-Butanone).
- C** - Co-elution: The target analyte co-elutes with a known lab standard (i.e. surrogate, internal standards, etc.) for co-extracted analyses.
- D** - Concentration of analyte was quantified from diluted analysis. Flag only applies to field samples that have detectable concentrations of the analyte.
- E** - Concentration of analyte exceeds the range of the calibration curve and/or linear range of the instrument.
- F** - The ratio of quantifier ion response to qualifier ion response falls outside of the laboratory criteria. Results are considered to be an estimated maximum concentration.
- G** - The concentration may be biased high due to matrix interferences (i.e. co-elution) with non-target compound(s). The result should be considered estimated.
- H** - The analysis of pH was performed beyond the regulatory-required holding time of 15 minutes from the time of sample collection.
- I** - The lower value for the two columns has been reported due to obvious interference.
- J** - Estimated value. This represents an estimated concentration for Tentatively Identified Compounds (TICs).
- M** - Reporting Limit (RL) exceeds the MCP CAM Reporting Limit for this analyte.

Report Format: Data Usability Report



Project Name: TPS
Project Number: 0321663005

Lab Number: L2448304
Report Date: 08/29/24

Data Qualifiers

- ND** - Not detected at the reporting limit (RL) for the sample.
- NJ** - Presumptive evidence of compound. This represents an estimated concentration for Tentatively Identified Compounds (TICs), where the identification is based on a mass spectral library search.
- P** - The RPD between the results for the two columns exceeds the method-specified criteria.
- Q** - The quality control sample exceeds the associated acceptance criteria. For DOD-related projects, LCS and/or Continuing Calibration Standard exceedences are also qualified on all associated sample results. Note: This flag is not applicable for matrix spike recoveries when the sample concentration is greater than 4x the spike added or for batch duplicate RPD when the sample concentrations are less than 5x the RL. (Metals only.)
- R** - Analytical results are from sample re-analysis.
- RE** - Analytical results are from sample re-extraction.
- S** - Analytical results are from modified screening analysis.
- V** - The surrogate associated with this target analyte has a recovery outside the QC acceptance limits. (Applicable to MassDEP DW Compliance samples only.)
- Z** - The batch matrix spike and/or duplicate associated with this target analyte has a recovery/RPD outside the QC acceptance limits. (Applicable to MassDEP DW Compliance samples only.)

Project Name: TPS
Project Number: 0321663005

Lab Number: L2448304
Report Date: 08/29/24

REFERENCES

- 1 Test Methods for Evaluating Solid Waste: Physical/Chemical Methods. EPA SW-846. Third Edition. Updates I - VI, 2018.

LIMITATION OF LIABILITIES

Alpha Analytical performs services with reasonable care and diligence normal to the analytical testing laboratory industry. In the event of an error, the sole and exclusive responsibility of Alpha Analytical shall be to re-perform the work at it's own expense. In no event shall Alpha Analytical be held liable for any incidental, consequential or special damages, including but not limited to, damages in any way connected with the use of, interpretation of, information or analysis provided by Alpha Analytical.

We strongly urge our clients to comply with EPA protocol regarding sample volume, preservation, cooling, containers, sampling procedures, holding time and splitting of samples in the field.



Certification Information

The following analytes are not included in our Primary NELAP Scope of Accreditation:

Westborough Facility

EPA 624.1: m/p-xylene, o-xylene, Naphthalene

EPA 625.1: alpha-Terpineol

EPA 8260D: NPW: 1,2,4,5-Tetramethylbenzene; 4-Ethyltoluene; SCM: Iodomethane (methyl iodide), 1,2,4,5-Tetramethylbenzene; 4-Ethyltoluene.

EPA 8270E: NPW: Dimethylnaphthalene,1,4-Diphenylhydrazine, alpha-Terpineol, Azobenzene; SCM: Dimethylnaphthalene,1,4-Diphenylhydrazine.

SM4500: NPW: Amenable Cyanide; SCM: Total Phosphorus, TKN, NO₂, NO₃.

Mansfield Facility

SM 2540D: TSS.

EPA TO-15: Halothane, 2,4,4-Trimethyl-2-pentene, 2,4,4-Trimethyl-1-pentene, Thiophene, 2-Methylthiophene,

3-Methylthiophene, 2-Ethylthiophene, 1,2,3-Trimethylbenzene, Indan, Indene, 1,2,4,5-Tetramethylbenzene, Benzothiophene, 1-Methylnaphthalene.

Nonpotable Water: EPA RSK-175 Dissolved Gases

Biological Tissue Matrix: EPA 3050B

The following analytes are included in our Massachusetts DEP Scope of Accreditation

Westborough Facility:

Drinking Water

EPA 300.0: Chloride, Nitrate-N, Fluoride, Sulfate; **EPA 353.2:** Nitrate-N, Nitrite-N; **SM4500NO3-F:** Nitrate-N, Nitrite-N; **SM4500F-C, SM4500CN-CE,**

EPA 180.1, SM2130B, SM4500Cl-D, SM2320B, SM2540C, SM4500H-B, SM4500NO2-B

EPA 524.2: THMs and VOCs; **EPA 504.1:** EDB, DBCP.

Microbiology: SM9215B; SM9223-P/A, SM9223B-Colilert-QT, SM9222D.

Non-Potable Water

SM4500H,B, EPA 120.1, SM2510B, SM2540C, SM2320B, SM4500CL-E, SM4500F-BC, SM4500NH3-BH: Ammonia-N and Kjeldahl-N, **EPA 350.1:**

Ammonia-N, **LACHAT 10-107-06-1-B:** Ammonia-N, **EPA 351.1, SM4500NO3-F, EPA 353.2:** Nitrate-N, **SM4500P-E, SM4500P-B, E, SM4500SO4-E,**

SM5220D, EPA 410.4, SM5210B, SM5310C, SM4500CL-D, EPA 1664, EPA 420.1, SM4500-CN-CE, SM2540D, EPA 300: Chloride, Sulfate, Nitrate.

EPA 624.1: Volatile Halocarbons & Aromatics,

EPA 608.3: Chlordane, Toxaphene, Aldrin, alpha-BHC, beta-BHC, gamma-BHC, delta-BHC, Dieldrin, DDD, DDE, DDT, Endosulfan I, Endosulfan II,

Endosulfan sulfate, Endrin, Endrin Aldehyde, Heptachlor, Heptachlor Epoxide, PCBs

EPA 625.1: SVOC (Acid/Base/Neutral Extractables).

Microbiology: SM9223B-Colilert-QT; Enterolert-QT, EPA 1600, EPA 1603, SM9222D.

Mansfield Facility:

Drinking Water

EPA 200.7: Al, Ba, Cd, Cr, Cu, Fe, Mn, Ni, Na, Ag, Ca, Zn. **EPA 200.8:** Al, Sb, As, Ba, Be, Cd, Cr, Cu, Pb, Mn, Ni, Se, Ag, TL, Zn. **EPA 245.1** Hg.

EPA 522, EPA 537.1.

Non-Potable Water

EPA 200.7: Al, Sb, As, Be, Cd, Ca, Cr, Co, Cu, Fe, Pb, Mg, Mn, Mo, Ni, K, Se, Ag, Na, Sr, TL, Ti, V, Zn.

EPA 200.8: Al, Sb, As, Be, Cd, Cr, Cu, Fe, Pb, Mn, Ni, K, Se, Ag, Na, TL, Zn.

EPA 245.1 Hg.

SM2340B

For a complete listing of analytes and methods, please contact your Alpha Project Manager.



CHAIN OF CUSTODY

PAGE 1 OF 1

Date Rec'd in Lab: 8/23/24

8 Walkup Drive
Westboro, MA 01581
Tel: 508-698-9220

320 Forbes Blvd
Mansfield, MA 02048
Tel: 508-822-9300

Project Information

Project Name: TPS
Project Location: Princeton MA
Project #: 0321663005
Project Manager: Chuck Klingler
ALPHA Quote #:

Report Information - Data Deliverables

ADEX EMAIL Same as Client info PO #:

Client Information

Client: ATLAS Technical
Address: 10 State St, Suite 100
Woburn MA
Phone: 774-272-2212
Email: charles.klingler@atlas.com
Additional Project Information:

Turn-Around Time

Standard RUSH (only confirmed if pre-approved)
Date Due: 7-10 day

Regulatory Requirements & Project Information Requirements

Yes No MA MCP Analytical Methods Yes No CT RCP Analytical Methods
 Yes No Matrix Spike Required on this SDG? (Required for MCP Inorganics)
 Yes No GW1 Standards (Info Required for Metals & EPH with Targets)
 Yes No NPDES RGP
 Other State /Fed Program TOSCA Criteria RB at school

RL must be < 0.5 ug/wipe

ANALYSIS	VOC: <input type="checkbox"/> 8260 <input type="checkbox"/> 824 <input type="checkbox"/> 524.2	SAMPLE INFO	
	SVOC: <input type="checkbox"/> ABN <input type="checkbox"/> PAH		Filtration
	METALS: <input type="checkbox"/> MCP 13 <input type="checkbox"/> MCP 14 <input type="checkbox"/> RCP 15		<input type="checkbox"/> Field
	METALS: <input type="checkbox"/> RCRA5 <input type="checkbox"/> RCRA8		<input type="checkbox"/> Lab to do
	EPH: <input type="checkbox"/> Ranges & Targets <input type="checkbox"/> Ranges Only		Preservation
	VPH: <input type="checkbox"/> Ranges & Targets <input type="checkbox"/> Ranges Only		<input type="checkbox"/> Lab to do
	PCB <input type="checkbox"/> PEST <u>3505, 3082</u>		
	TPH: <input type="checkbox"/> Quant Only <input type="checkbox"/> Fingerprint		

ALPHA Lab ID (Lab Use Only)	Sample ID	Collection		Sample Matrix	Sampler Initials
		Date	Time		
48304-01	100/102 EXT	8/23/24	11:15	Wipe	CD
-02	104/106 EXT	↓	11:30	Wipe	CD
-03	108/110 EXT		11:40	Wipe	CD
-04	203 EXT		11:00	Wipe	CD
-05	205 EXT		10:45	Wipe	CD
-06	211 EXT		10:30	Wipe	CD
-07	DUP EXT		11:48	Wipe	CD
-08	BLANK		11:50	Wipe	CD

- Container Type**
P= Plastic
A= Amber glass
V= Vial
G= Glass
B= Bacteria cup
C= Cubic
O= Other
E= Encore
D= BOD Bottle
- Preservative**
A= None
B= HCl
C= HNO₃
D= H₂SO₄
E= NaOH
F= MeOH
G= NaHSO₄
H= Na₂S₂O₄
I= Ascorbic Acid
J= NH₄Cl
K= Zn Acetate
O= Other

Container Type	
Preservative	

Relinquished By: [Signature] Date/Time: 8/23/24
8/23/24 13:47

Received By: [Signature] Date/Time: 8/23/24 12:50
8/23/24 13:47

All samples submitted are subject to Alpha's Terms and Conditions. See reverse side. FORM NO: 01-01 (rev. 12-Mar-2012)

ATTACHMENT II

ANNUAL VISUAL INSPECTION FORM

Thomas Prince School
170 Sterling Road, Princeton, Massachusetts

Date: 8/23/2024 Room #: EXT 100/102, 104/106 & 108/110

Weather: 80's, Sunny, Clear

Name of Inspector: Klingler

Inspection Criteria	Epoxy Coated Porous Surfaces
Is the coating peeling, chipping, or otherwise compromised?	<input type="checkbox"/> Yes if yes, describe: <input checked="" type="checkbox"/> No
Is maintenance of the coating needed?	<input type="checkbox"/> Yes if yes, describe Yes <input checked="" type="checkbox"/> No
Were wipe samples collected?	<input checked="" type="checkbox"/> Yes Wipe samples collected from 100/102, 104/106 & 108/110 <input type="checkbox"/> No

ANNUAL VISUAL INSPECTION FORM

Thomas Prince School
170 Sterling Road, Princeton, Massachusetts

Date: 8/23/2024 Room #: EXT 201, 203, 205, 207, 209 & 211

Weather: 80's, Sunny, Clear

Name of Inspector: Klingler

Inspection Criteria	Epoxy Coated Porous Surfaces
Is the coating peeling, chipping, or otherwise compromised?	<input type="checkbox"/> Yes if yes, describe: <input checked="" type="checkbox"/> No
Is maintenance of the coating needed?	<input type="checkbox"/> Yes if yes, describe Yes <input checked="" type="checkbox"/> No
Were wipe samples collected?	<input checked="" type="checkbox"/> Yes Wipe samples collected from 203, 205 and 211 <input type="checkbox"/> No

ANNUAL VISUAL INSPECTION FORM

Thomas Prince School
170 Sterling Road, Princeton, Massachusetts

Date: 8/23/2024 Room #: INT 100, 102, 104, 106, 108 & 110

Weather: 80's, Sunny, Clear

Name of Inspector: Klingler

Inspection Criteria	Epoxy Coated Porous Surfaces
Is the coating peeling, chipping, or otherwise compromised?	<input type="checkbox"/> Yes if yes, describe: <input checked="" type="checkbox"/> No
Is maintenance of the coating needed?	<input type="checkbox"/> Yes if yes, describe Yes <input checked="" type="checkbox"/> No
Were wipe samples collected?	<input type="checkbox"/> Yes <input checked="" type="checkbox"/> No

ANNUAL VISUAL INSPECTION FORM

Thomas Prince School
170 Sterling Road, Princeton, Massachusetts

Date: 8/23/2024 Room #: INT 201, 203, 205, 207, 209 & 211

Weather: 80's, Sunny, Clear

Name of Inspector: Klingler

Inspection Criteria	Epoxy Coated Porous Surfaces
Is the coating peeling, chipping, or otherwise compromised?	<input type="checkbox"/> Yes if yes, describe: <input checked="" type="checkbox"/> No
Is maintenance of the coating needed?	<input type="checkbox"/> Yes if yes, describe Yes <input checked="" type="checkbox"/> No
Were wipe samples collected?	<input type="checkbox"/> Yes <input checked="" type="checkbox"/> No