

Wachusett Regional School District



Annual Report
2014

Wachusett Regional School District

Serving the towns of Holden, Paxton, Princeton, Rutland, and Sterling



Our mission is to provide excellence in teaching, learning, and social development so that all students can realize their highest potential as responsible and productive citizens.

Executive Staff

Darryll McCall, Ed.D., Superintendent of Schools

Joseph Scanlon, Director of Business and Finance

Jeffrey Carlson, Director of Human Resources

James Dunbar, Treasurer

1745 Main Street
Jefferson MA 01522

508-829-1670

www.wrsd.net

The Wachusett Regional School District does not discriminate on the basis of race, color, sex, religion, age, national origin, sexual orientation, gender identity, disability, ELL status, housing status, or other protected status in the operation of the educational programs, activities, or employment policies, and no person will be excluded from or discriminated against in admission to its public schools, or in obtaining advantage and privileges in regards to courses of study and extracurricular programs of such public schools on account of race, color, sex, religion, age, national origin, sexual orientation, gender identity, disability, ELL status, housing status or other protected category.

Table of Contents

A message from the Superintendent	4
2014-15 Wachusett Regional School District Committee	5
Wachusett Regional School District Committee Goals	6
Section I: Our Schools	7
Central Tree Middle School	8
Chocksett Middle School	8
Davis Hill Elementary School	8
Dawson Elementary School	8
Early Childhood Center	9
Glenwood Elementary School	9
Houghton Elementary School	9
Mayo Elementary School	10
Mountview Middle School	10
Naquag Elementary School	10
Paxton Center School	11
Thomas Prince School	11
Wachusett Regional High School	11
Section II: MCAS Results & Advanced Placement Information	12
MCAS - District Summary	13
MCAS - Wachusett Regional High School	13
MCAS - Central Tree Middle School	14
MCAS - Chocksett Middle School	14
MCAS - Davis Hill Elementary School	15
MCAS - Dawson Elementary School	15
MCAS - Glenwood Elementary School	16
MCAS - Houghton Elementary School	16
MCAS - Mayo Elementary School	17
MCAS - Mountview Middle School	17
MCAS - Paxton Center School	18
MCAS - Thomas Prince School	18
Advanced Placement Performance Report	19
Section III: Financial Reports	20
Enrollment and Required Net School Spending	21
FY15 Appropriation - Adopted 7/14/14	22
Expenditures	23
Local Revenues	24
State Aid and Other Revenues	26
FY 2015 Expense Budget Allocation Summary	27

A Message From the Superintendent

This year, we at the Wachusett Regional School District will continue to focus on providing our students with the best education possible through the avenues of student safety and well being, professional development for teachers, and further enhancement of our technology program. Individually, these initiatives are all important, but when combined, they provide students with a strong, comprehensive opportunity for learning.

Students need to feel safe in their school environment in order to learn, and this is a priority for the District. All of our schools have safety protocols, including front entrances with buzzer systems, security cameras, and school crisis plans. To that end, working in conjunction with local police and fire departments, I am establishing a District-level emergency management team comprised of police and fire officials and District administrators.

For the 2014-2015 school year, we have established a strong professional development program that will support individual professional development programs for teachers, as well as District-level professional development. This support will increase instructional knowledge and improve learning outcomes for students. With the addition of a Curriculum Supervisor for the middle schools, I am confident that our support of teachers will benefit the District.

We are proud to introduce two new math programs. Both math series, Eureka Math and Big Ideas Math, are aligned with the new state math standards and reflect a more consistent methodology for teaching math concepts. These new programs will help our K-8 students be better prepared for high school math courses through consistent learning outcomes and goals throughout all of our schools.

Finally, the District will identify opportunities for improving WiFi-infrastructure in order to enhance our interconnectivity. For example, our high school is working to provide WiFi access to students in most of the common areas throughout the building. This will enable students to work on assignments while they are engaged within our learning environment. In the Fall of 2014, we launched a new Wachusett mobile app that allows students, staff and parents/guardians to access District and school information. Mobile learning and information access are vital to the success of our students as they prepare for higher education and/or the job market.

I would like to thank all parents/guardians, teachers, staff, and community members for their continued support and dedication to the education of the children in the Wachusett Regional School District. Working together, we will provide our students with a quality education that will prepare them for success in the future.

Sincerely,

Darryll McCall, Ed.D.
Superintendent

2014-15 Wachusett Regional School District Committee

Lance Harris, Chair	Sterling
Robert Imber, Vice-chair	Princeton
Scott Brown	Holden
Thomas Curran	Holden
Michael Dennis	Holden
Matthew Ehrenworth	Rutland
Timothy Ethier	Holden
Harriet Fradellos	Paxton
Susan Hitchcock	Sterling
Stacey Jackson	Holden
Julianne Kelley	Rutland
Deidre Kosky	Holden
Sarah LaMountain	Sterling
Robert McCarthy	Holden
Kenneth Mills	Holden
Steve Porter	Sterling
Robert Remillard	Rutland
Barbara Renzoni	Paxton
Brian Ruttle	Princeton
Erik Scheinfeldt	Holden
Christina Smith	Holden
Charles Witkes	Rutland

Wachusett Regional School District Committee Goals

Theme I: School Culture and Climate

- Goal #1: Unify the community around the vision, mission, core values, and goals.
- Goal #2: Provide an environment where students are safe, supported, empowered, and held accountable, and where respect for self and others is highly valued.
- Goal #3: Strengthen partnerships among staff, students, parents, and community members that support teaching and learning.

Theme II: Curriculum, Instruction, and Assessment

- Goal #4: Ensure that instructional practices recognize and accommodate a range of abilities and learning styles in an effort to promote excellence and assist students in reaching their potential.
- Goal #5: Develop programs to increase equitable educational opportunities to all students in the District.
- Goal #6: Develop programs that ensure there is consistency in instruction and continuity of curriculum in what we teach.

Theme III: Student Support Services: The Whole Child

- Goal #7: Enhance the District's capacity to identify and respond to students at risk.
- Goal #8: Promote/provide programs and practices that enhance the social/emotional well being of all students.

Theme IV: Personnel and Professional Development

- Goal #9: Create more opportunities for collaboration and mentoring.
- Goal #10: Develop more professional development opportunities within the District and make available more programs outside the school district. Professional development opportunities will be focused and targeted.
- Goal #11: Develop recruitment approaches that maximize the District's ability to recruit high quality staff.

Theme V: Instructional Support and Facilities

- Goal #12: Develop a long-term plan for the renovation and maintenance of school facilities.
- Goal #13: Identify and plan for the use of technology and media that will enhance education and/or increase the efficiency of administration.

Theme VI: Community Relations and Communications

- Goal #14: Work cooperatively with town governments to improve communication and mutual understanding.
- Goal #15: Increase accessibility of school facilities and programs to residents and communities.

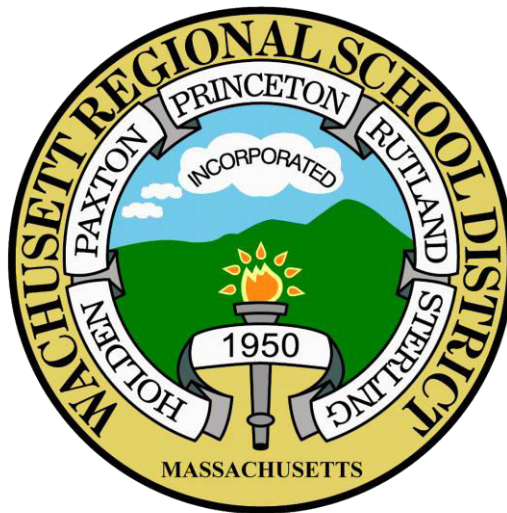
Theme VII: Organizational Leadership and Management

- Goal #16: Maintain a continuing self-review of productivity, roles and operations by the school administration and the School Committee.
- Goal #17: Identify/promote succession planning at all administrative levels.
- Goal #18: Improve communication with staff, students, parents and the community.

Theme VIII: Educational Funding

- Goal #19: Seek financial efficiencies and maximize the cost effectiveness of programs and services while meeting improvement goals.
- Goal #20: Secure funding and resources to support programs and planning efforts.

Our Schools



Central Tree Middle School

281 Main Street - Rutland, MA



Principal: Todd Stewart
Assistant Principal: Nancy Bates

Central Tree Middle School serves a student body of approximately 425 sixth, seventh, and eighth graders. Thirty three teachers and additional support staff remained committed to fostering a safe and orderly school environment while consequently improving the quality of instruction and increasing parent involvement.

Chocksett Middle School

40 Boutelle Road - Sterling, MA



Principal: Anthony Cipro
Assistant Principal: David Fredette

Chocksett Middle School has an enrollment of 410 students within a grade span of grades five through eight. Its instructional staff of twenty-nine teachers, supported by classroom aides, office staff, and parent volunteers provided Sterling's youth with a quality education.

Davis Hill Elementary School

80 Jamieson Road - Holden, MA



Principal: Jay Norton
Assistant Principal: Robert Berthiaume

Davis Hill is attended by over 475 students in kindergarten through grade five. Our Mission Statement and core values of Pride, Respect, Responsibility and Excellence provide the foundation for our educational program. Our developmentally appropriate curriculum is aligned to the Common Core and is focused on balanced literacy, numeracy, critical thinking and problem solving skills.

Dawson Elementary School

155 Salisbury Street - Holden, MA



Principal: Patricia Scales
Assistant Principal: Kelly Williamson

support staff, and administration.

Dawson Elementary School continues its tradition of providing educational excellence while promoting strong social skills and positive values within our students. We continue to engage and challenge students in an environment that fosters the IALAC (I am Loving and Caring) spirit. Meeting the needs of all the children at Dawson is the primary goal of all the teachers,

Early Childhood Center

1745 Main Street - Jefferson, MA



Principal: Patricia Ottaviano

Our mission at the Early Childhood Center is to provide a developmentally appropriate preschool education that meets the needs of all children. It is our belief that through a differentiated approach to instruction, all children can become active, life-long learners ready to succeed in our ever changing global society

Glenwood Elementary School

65 Glenwood Road - Rutland, MA



Principal: Karen Cappucci

Assistant Principal: Matthew Gauvin

Glenwood Elementary School in Rutland serves students in grades 3 through 5. In addition to regular education, Glenwood also maintains five substantially separate programs; a Transition program, an ABA classroom and three Developmental classrooms. Due to its unique populations and diverse learners, Glenwood is a collaborative community where all students are educated in the Least Restrictive Environment and all teachers are committed to building curriculum that helps the students

develop strong critical thinking, and problem solving abilities.

Houghton Elementary School

32 Boutelle Road - Sterling, MA



Principal: Anthony Cipro

Assistant Principal: Patricia O'Donnell

Houghton Elementary School is a child-centered school focused on teaching and learning. The school has an enrollment of 420 children within a grade span of kindergarten through grade four. We provide our children with both a strong foundation in basic skills and opportunities to expand the thinking of young minds. By matching a child's natural curiosity with literature, mathematics, science/technology, the arts, social studies, social

skills and the environment, Houghton School plants the seeds for lifelong learning.

Mayo Elementary School

351 Bullard Street - Holden, MA



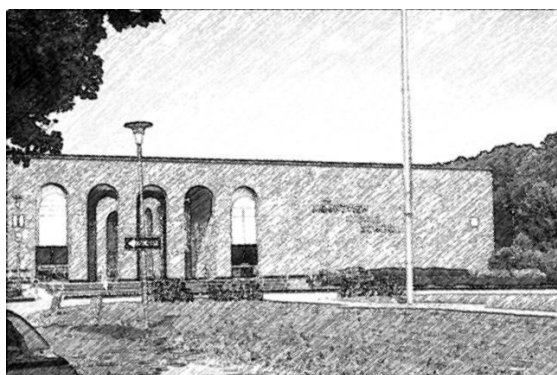
Principal: Judy Evans
Assistant Principal: Patricia Hurley

Dr. Leroy E. Mayo Elementary School is a kindergarten through grade five school with a population of approximately five hundred children. The mission of Mayo School is to educate, inspire, and empower all members of the learning community. Students and staff are committed to enhancing the lives of the school community and the lives of others by upholding the highest standards of quality and integrity. Children at Mayo

Elementary School are provided with a solid educational foundation necessary to be successful throughout their academic lives.

Mountview Middle School

270 Shrewsbury Street - Holden, MA



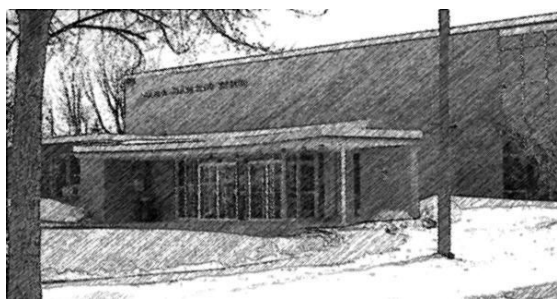
Principal: Erik Githmark
Assistant Principals: Karen Hughes, Brian McCarthy

Mountview Middle School, with 790 students in grades six, seven, and eight, has a faculty of forty-six, highly qualified, professionally certified educators. Additionally, there are eleven support staff, and ten custodial and cafeteria staff. Our students represent a diverse group of learners and are typical ten to fourteen year old young adolescents. At Mountview, we recognize the divergent needs of young adolescents as they experience a wide range of physical, social, intellectual, and

emotional growth between the ages of 10-14. Educational decisions are based upon principles of developmentally appropriate practices for these young people so as to maximize their potential to succeed in tomorrow's world.

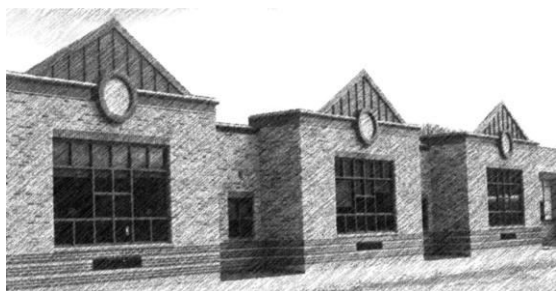
Naquag Elementary School

285 Main Street - Rutland, MA



Principal: Dixie Herbst

Naquag Elementary's administration, faculty and staff are committed to providing every student with support and understanding in order to maintain our excellent learning environment; we take pride in our learning atmosphere. We recognize the importance of community involvement and express our appreciation to all parents, family members and town representatives for their continued support.

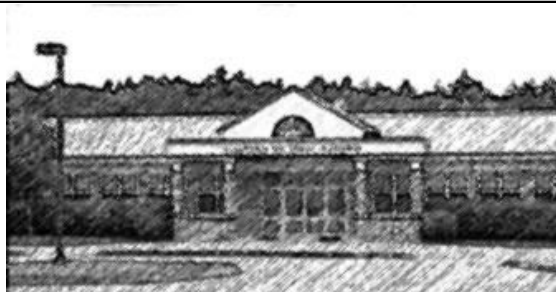


Principal: Kathleen McCollum

Assistant Principal: Kellie O'Brien

Paxton Center School continues to be a student centered school and provides a successful learning environment for all students. We continue to review trends in student achievement data in the areas of reading, written language and math skills for all nine years of education. Teachers regularly discuss student progress across grade levels, meeting to plan next steps based on student

needs. Teachers also meet regularly across grade levels and curricular areas to discuss building wide trends and next steps for continual improvement. Our goal is to be a community of learners in which individuals reach maximum potential intellectually, socially, emotionally, and physically.



Principal: Mary Cringan

Assistant Principal: Karen Baer

Thomas Prince is a small community school where everyone comes together to promote learning and high academic achievement. Three hundred and seventy two students in grades kindergarten through eight along with fifty teachers and support staff work together to accomplish its goals each and every school

day. Thomas Prince School is truly a community of learners, a place where staff and students, along with parents, have a shared vision of what the school is seeking to accomplish. Our mission is to strive to be a school comprised of a community of learners in which individuals reach his/her maximum potential intellectually, socially, emotionally, and physically.



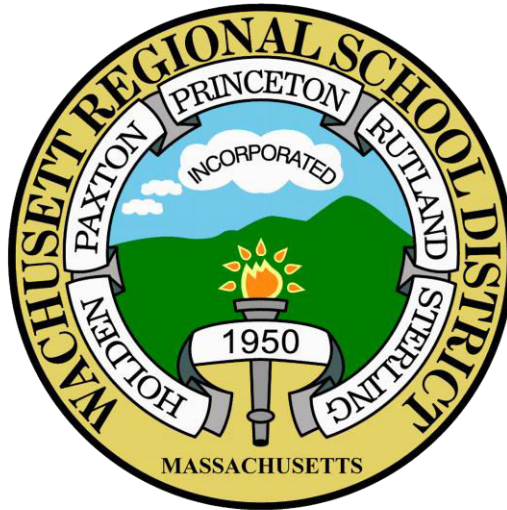
Principal: William Beando

Assistant Principals: Andrew Costa, Victoria DeSimone,
Anthony DiBenedetto, Michael Pratt

Wachusett Regional High School continues to prepare all of its students for life after high school. Students learn the necessary skills needed to further their education, join the armed forces, or enter the world of work. All students are held to a rigorous set of graduation requirements that ensures they master a common core curriculum. At Wachusett, we are very proud to have our students achieve and excel in our classrooms, performance areas,

and playing fields that are contained within our magnificent high school campus that the five towns of the Wachusett Regional School District have provided for our students.

MCAS Results & Advanced Placement Information



MCAS Results - Spring 2014

Percent of Students at Each Achievement Level

Wachusett Regional School District

Grade and Subject	Proficient or Higher		Advanced		Proficient		Needs Improvement		Warning/ Failing		Students Included	CPI	SGP	Included in SGP
	DISTRICT	STATE	DISTRICT	STATE	DISTRICT	STATE	DISTRICT	STATE	DISTRICT	STATE				
GRADE 03 READING	73	57	18	12	56	46	22	33	5	10	576	90.3	N/A	N/A
GRADE 03 MATHEMATICS	83	68	42	31	41	38	13	21	3	11	577	93.5	N/A	N/A
GRADE 04 ENGLISH LANGUAGE ARTS	66	54	21	13	45	41	26	33	8	13	572	87.0	58.0	542
GRADE 04 MATHEMATICS	64	52	26	20	38	32	28	36	8	12	578	86.5	57.0	545
GRADE 05 ENGLISH LANGUAGE ARTS	81	64	28	18	53	46	16	26	3	10	642	93.0	52.0	611
GRADE 05 MATHEMATICS	78	61	47	30	31	30	15	24	7	15	641	90.5	60.0	611
GRADE 05 SCIENCE AND TECH/ENG	71	53	32	20	39	33	25	34	4	13	641	89.4	N/A	N/A
GRADE 06 ENGLISH LANGUAGE ARTS	86	68	26	16	60	52	11	23	4	9	581	95.2	54.0	551
GRADE 06 MATHEMATICS	83	60	49	29	35	31	12	25	5	15	581	93.6	59.5	552
GRADE 07 ENGLISH LANGUAGE ARTS	88	72	20	11	68	61	11	21	2	7	647	95.9	57.0	616
GRADE 07 MATHEMATICS	65	50	25	17	41	33	21	26	13	24	646	82.9	50.0	613
GRADE 08 ENGLISH LANGUAGE ARTS	91	79	21	14	70	65	7	14	2	8	602	96.7	47.0	578
GRADE 08 MATHEMATICS	67	52	21	19	46	33	24	29	8	19	605	84.9	46.0	581
GRADE 08 SCIENCE AND TECH/ENG	67	42	8	4	59	38	28	41	4	18	604	87.2	N/A	N/A
GRADE 10 ENGLISH LANGUAGE ARTS	97	90	60	41	37	48	2	8	1	3	561	98.8	58.5	528
GRADE 10 MATHEMATICS	91	79	72	53	18	25	7	15	3	7	558	96.1	55.0	523
GRADE 10 SCIENCE AND TECH/ENG	83	71	40	29	43	42	15	24	2	5	546	93.6	N/A	N/A
ALL GRADES ENGLISH LANGUAGE ARTS	83	69	27	18	56	51	13	22	3	8	4,181	93.9	55.0	3,426
ALL GRADES MATHEMATICS	76	60	40	28	36	32	17	25	7	15	4,186	89.6	55.0	3,425
ALL GRADES SCIENCE AND TECH/ENG	74	55	26	17	47	38	23	33	3	12	1,791	89.9	N/A	N/A

MCAS Results by School - Spring 2014

Percent of Students at Each Achievement Level

Wachusett Regional High School

Grade and Subject	Proficient or Higher		Advanced		Proficient		Needs Improvement		Warning/ Failing		Students Included	CPI	SGP	Included in SGP
	SCHOOL	STATE	SCHOOL	STATE	SCHOOL	STATE	SCHOOL	STATE	SCHOOL	STATE				
GRADE 10 ENGLISH LANGUAGE ARTS	97	90	61	41	37	48	2	8	1	3	550	98.9	59.0	526
GRADE 10 MATHEMATICS	91	79	73	53	18	25	7	15	2	7	546	96.4	55.0	522
GRADE 10 SCIENCE AND TECH/ENG	84	71	40	29	44	42	15	24	1	5	542	93.9	N/A	N/A
ALL GRADES ENGLISH LANGUAGE ARTS	97	90	61	41	37	49	2	8	1	2	550	98.9	59.0	526
ALL GRADES MATHEMATICS	91	79	73	53	18	26	7	15	2	6	546	96.4	55.0	522
ALL GRADES SCIENCE AND TECH/ENG	84	71	40	30	44	42	15	24	1	5	542	93.9	N/A	N/A

MCAS Results by School - Spring 2014

Percent of Students at Each Achievement Level

Central Tree Middle School

Grade and Subject	Proficient or Higher		Advanced		Proficient		Needs Improvement		Warning/ Failing		Students Included	CPI	SGP	Included in SGP
	SCHOOL	STATE	SCHOOL	STATE	SCHOOL	STATE	SCHOOL	STATE	SCHOOL	STATE				
GRADE 06 ENGLISH LANGUAGE ARTS	82	68	9	16	72	52	15	23	3	9	119	92.4	36.0	116
GRADE 06 MATHEMATICS	78	60	41	29	37	31	18	25	4	15	119	91.8	58.0	117
GRADE 07 ENGLISH LANGUAGE ARTS	85	72	12	11	73	61	14	21	2	7	155	95.0	43.0	152
GRADE 07 MATHEMATICS	61	50	23	17	39	33	25	26	14	24	155	81.0	56.0	151
GRADE 08 ENGLISH LANGUAGE ARTS	89	79	17	14	72	65	9	14	2	8	129	95.9	57.0	126
GRADE 08 MATHEMATICS	60	52	15	19	45	33	31	29	9	19	129	82.8	38.5	126
GRADE 08 SCIENCE AND TECH/ENG	64	42	9	4	55	38	30	41	6	18	129	84.5	N/A	N/A
ALL GRADES ENGLISH LANGUAGE ARTS	85	74	13	15	72	59	12	19	2	7	403	94.5	44.5	394
ALL GRADES MATHEMATICS	66	55	26	22	40	33	25	27	9	18	403	84.7	51.5	394
ALL GRADES SCIENCE AND TECH/ENG	64	45	9	7	55	39	30	39	6	16	129	84.5	N/A	N/A

Chocksett Middle School

Grade and Subject	Proficient or Higher		Advanced		Proficient		Needs Improvement		Warning/ Failing		Students Included	CPI	SGP	Included in SGP
	SCHOOL	STATE	SCHOOL	STATE	SCHOOL	STATE	SCHOOL	STATE	SCHOOL	STATE				
GRADE 05 ENGLISH LANGUAGE ARTS	89	64	42	18	47	46	9	26	2	10	89	95.5	63.0	88
GRADE 05 MATHEMATICS	87	61	62	30	25	30	9	24	4	15	89	93.8	64.5	88
GRADE 05 SCIENCE AND TECH/ENG	85	53	51	20	35	33	15	34	0	13	89	94.9	N/A	N/A
GRADE 06 ENGLISH LANGUAGE ARTS	90	68	34	16	56	52	9	23	1	9	109	96.6	58.0	108
GRADE 06 MATHEMATICS	83	60	39	29	45	31	16	25	1	15	109	94.3	43.0	108
GRADE 07 ENGLISH LANGUAGE ARTS	92	72	30	11	62	61	8	21	0	7	107	97.4	67.0	106
GRADE 07 MATHEMATICS	78	50	33	17	45	33	13	26	9	24	105	89.0	58.0	104
GRADE 08 ENGLISH LANGUAGE ARTS	95	79	23	14	72	65	3	14	2	8	95	97.6	41.0	93
GRADE 08 MATHEMATICS	69	52	19	19	50	33	22	29	9	19	94	86.4	51.0	93
GRADE 08 SCIENCE AND TECH/ENG	70	42	11	4	59	38	25	41	5	18	93	87.9	N/A	N/A
ALL GRADES ENGLISH LANGUAGE ARTS	91	74	32	15	59	59	8	19	1	7	400	96.8	58.0	395
ALL GRADES MATHEMATICS	79	55	38	22	42	33	15	27	6	18	397	90.9	54.0	393
ALL GRADES SCIENCE AND TECH/ENG	77	45	30	7	47	39	20	39	3	16	182	91.3	N/A	N/A

MCAS Results by School - Spring 2014

Percent of Students at Each Achievement Level

Davis Hill Elementary School

Grade and Subject	Proficient or Higher		Advanced		Proficient		Needs Improvement		Warning/ Failing		Students Included	CPI	SGP	Included in SGP
	SCHOOL	STATE	SCHOOL	STATE	SCHOOL	STATE	SCHOOL	STATE	SCHOOL	STATE				
GRADE 03 READING	67	57	13	12	54	46	27	33	6	10	82	86.6	N/A	N/A
GRADE 03 MATHEMATICS	82	68	41	31	40	38	17	21	1	11	82	93.6	N/A	N/A
GRADE 04 ENGLISH LANGUAGE ARTS	80	54	23	13	57	41	16	33	4	13	82	92.1	73.0	81
GRADE 04 MATHEMATICS	73	52	30	20	43	32	27	36	0	12	83	93.1	66.5	82
GRADE 05 ENGLISH LANGUAGE ARTS	76	64	20	18	55	46	22	26	2	10	103	92.2	40.0	101
GRADE 05 MATHEMATICS	68	61	37	30	31	30	25	24	7	15	103	86.4	44.5	102
GRADE 05 SCIENCE AND TECH/ENG	69	53	25	20	44	33	26	34	5	13	103	87.6	N/A	N/A
ALL GRADES ENGLISH LANGUAGE ARTS	75	61	19	15	55	46	22	30	4	10	267	90.4	55.0	182
ALL GRADES MATHEMATICS	74	62	36	28	38	34	23	27	3	11	268	90.7	56.0	184
ALL GRADES SCIENCE AND TECH/ENG	69	56	25	21	44	35	26	33	5	11	103	87.6	N/A	N/A

Dawson Elementary School

Grade and Subject	Proficient or Higher		Advanced		Proficient		Needs Improvement		Warning/ Failing		Students Included	CPI	SGP	Included in SGP
	SCHOOL	STATE	SCHOOL	STATE	SCHOOL	STATE	SCHOOL	STATE	SCHOOL	STATE				
GRADE 03 READING	81	57	26	12	55	46	18	33	1	10	77	93.8	N/A	N/A
GRADE 03 MATHEMATICS	92	68	65	31	27	38	6	21	1	11	77	97.1	N/A	N/A
GRADE 04 ENGLISH LANGUAGE ARTS	86	54	30	13	56	41	14	33	0	13	77	94.8	63.0	76
GRADE 04 MATHEMATICS	69	52	23	20	45	32	27	36	4	12	77	88.6	45.5	76
GRADE 05 ENGLISH LANGUAGE ARTS	91	64	38	18	53	46	9	26	0	10	89	96.6	45.0	89
GRADE 05 MATHEMATICS	88	61	67	30	20	30	12	24	0	15	89	96.1	58.0	89
GRADE 05 SCIENCE AND TECH/ENG	71	53	27	20	44	33	27	34	2	13	89	88.8	N/A	N/A
ALL GRADES ENGLISH LANGUAGE ARTS	86	61	32	15	54	46	14	30	0	10	243	95.2	52.0	165
ALL GRADES MATHEMATICS	83	62	53	28	30	34	15	27	2	11	243	94.0	53.0	165
ALL GRADES SCIENCE AND TECH/ENG	71	56	27	21	44	35	27	33	2	11	89	88.8	N/A	N/A

MCAS Results by School - Spring 2014

Percent of Students at Each Achievement Level

Glenwood Elementary School

Grade and Subject	Proficient or Higher		Advanced		Proficient		Needs Improvement		Warning/ Failing		Students Included	CPI	SGP	Included in SGP
	SCHOOL	STATE	SCHOOL	STATE	SCHOOL	STATE	SCHOOL	STATE	SCHOOL	STATE				
GRADE 03 READING	68	57	13	12	55	46	22	33	10	10	136	88.2	N/A	N/A
GRADE 03 MATHEMATICS	80	68	38	31	43	38	14	21	6	11	136	93.2	N/A	N/A
GRADE 04 ENGLISH LANGUAGE ARTS	60	54	24	13	35	41	20	33	20	13	127	80.9	55.0	113
GRADE 04 MATHEMATICS	52	52	20	20	32	32	30	36	19	12	128	79.7	42.0	114
GRADE 05 ENGLISH LANGUAGE ARTS	77	64	23	18	54	46	16	26	7	10	146	90.4	58.0	139
GRADE 05 MATHEMATICS	72	61	36	30	36	30	17	24	11	15	146	87.2	64.0	139
GRADE 05 SCIENCE AND TECH/ENG	60	53	26	20	34	33	32	34	8	13	146	85.1	N/A	N/A
ALL GRADES ENGLISH LANGUAGE ARTS	69	61	20	15	49	46	19	30	12	10	409	86.7	57.5	252
ALL GRADES MATHEMATICS	68	62	31	28	37	34	20	27	12	11	410	86.8	54.0	253
ALL GRADES SCIENCE AND TECH/ENG	60	56	26	21	34	35	32	33	8	11	146	85.1	N/A	N/A

Houghton Elementary School

Grade and Subject	Proficient or Higher		Advanced		Proficient		Needs Improvement		Warning/ Failing		Students Included	CPI	SGP	Included in SGP
	SCHOOL	STATE	SCHOOL	STATE	SCHOOL	STATE	SCHOOL	STATE	SCHOOL	STATE				
GRADE 03 READING	81	57	18	12	63	46	18	33	1	10	94	93.4	N/A	N/A
GRADE 03 MATHEMATICS	86	68	52	31	35	38	11	21	3	11	95	93.7	N/A	N/A
GRADE 04 ENGLISH LANGUAGE ARTS	72	54	27	13	44	41	26	33	2	13	95	89.7	65.0	93
GRADE 04 MATHEMATICS	71	52	29	20	42	32	27	36	2	12	96	89.3	61.0	94
ALL GRADES ENGLISH LANGUAGE ARTS	76	61	23	15	53	46	22	30	2	10	189	91.5	65.0	93
ALL GRADES MATHEMATICS	79	62	40	28	38	34	19	27	3	11	191	91.5	61.0	94
ALL GRADES SCIENCE AND TECH/ENG		56		21		35		33		11			N/A	N/A

MCAS Results by School - Spring 2014

Percent of Students at Each Achievement Level

Mayo Elementary School

Grade and Subject	Proficient or Higher		Advanced		Proficient		Needs Improvement		Warning/ Failing		Students Included	CPI	SGP	Included in SGP
	SCHOOL	STATE	SCHOOL	STATE	SCHOOL	STATE	SCHOOL	STATE	SCHOOL	STATE				
GRADE 03 READING	70	57	14	12	56	46	26	33	4	10	84	88.4	N/A	N/A
GRADE 03 MATHEMATICS	89	68	29	31	60	38	8	21	2	11	83	95.2	N/A	N/A
GRADE 04 ENGLISH LANGUAGE ARTS	59	54	13	13	46	41	39	33	3	13	80	85.3	40.0	80
GRADE 04 MATHEMATICS	68	52	34	20	34	32	29	36	4	12	80	86.6	62.0	80
GRADE 05 ENGLISH LANGUAGE ARTS	76	64	16	18	60	46	22	26	2	10	92	91.8	50.0	89
GRADE 05 MATHEMATICS	87	61	46	30	41	30	12	24	1	15	92	94.8	74.0	89
GRADE 05 SCIENCE AND TECH/ENG	66	53	26	20	40	33	33	34	1	13	92	88.3	N/A	N/A
ALL GRADES ENGLISH LANGUAGE ARTS	69	61	14	15	54	46	29	30	3	10	256	88.7	46.0	169
ALL GRADES MATHEMATICS	82	62	36	28	45	34	16	27	2	11	255	92.4	67.0	169
ALL GRADES SCIENCE AND TECH/ENG	66	56	26	21	40	35	33	33	1	11	92	88.3	N/A	N/A

Mountview Middle School

Grade and Subject	Proficient or Higher		Advanced		Proficient		Needs Improvement		Warning/ Failing		Students Included	CPI	SGP	Included in SGP
	SCHOOL	STATE	SCHOOL	STATE	SCHOOL	STATE	SCHOOL	STATE	SCHOOL	STATE				
GRADE 06 ENGLISH LANGUAGE ARTS	91	68	33	16	57	52	8	23	1	9	227	97.5	58.0	221
GRADE 06 MATHEMATICS	89	60	57	29	32	31	9	25	2	15	226	95.6	65.0	220
GRADE 07 ENGLISH LANGUAGE ARTS	92	72	26	11	66	61	8	21	0	7	251	97.5	64.0	245
GRADE 07 MATHEMATICS	70	50	27	17	43	33	20	26	10	24	251	85.3	47.5	246
GRADE 08 ENGLISH LANGUAGE ARTS	94	79	23	14	71	65	5	14	1	8	241	97.9	48.0	237
GRADE 08 MATHEMATICS	67	52	21	19	46	33	27	29	6	19	243	84.4	40.0	240
GRADE 08 SCIENCE AND TECH/ENG	67	42	6	4	61	38	31	41	2	18	243	88.1	N/A	N/A
ALL GRADES ENGLISH LANGUAGE ARTS	92	74	27	15	65	59	7	19	1	7	719	97.6	58.0	703
ALL GRADES MATHEMATICS	75	55	34	22	41	33	19	27	6	18	720	88.2	51.0	706
ALL GRADES SCIENCE AND TECH/ENG	67	45	6	7	61	39	31	39	2	16	243	88.1	N/A	N/A

MCAS Results by School - Spring 2014

Percent of Students at Each Achievement Level

Paxton Center School

Grade and Subject	Proficient or Higher		Advanced		Proficient		Needs Improvement		Warning/ Failing		Students Included	CPI	SGP	Included in SGP
	SCHOOL	STATE	SCHOOL	STATE	SCHOOL	STATE	SCHOOL	STATE	SCHOOL	STATE				
GRADE 03 READING	72	57	20	12	52	46	27	33	2	10	64	91.4	N/A	N/A
GRADE 03 MATHEMATICS	72	68	36	31	36	38	25	21	3	11	64	88.7	N/A	N/A
GRADE 04 ENGLISH LANGUAGE ARTS	51	54	10	13	41	41	44	33	5	13	61	82.8	45.0	61
GRADE 04 MATHEMATICS	67	52	30	20	38	32	28	36	5	12	61	87.7	68.0	61
GRADE 05 ENGLISH LANGUAGE ARTS	80	64	27	18	53	46	18	26	2	10	60	93.3	58.0	59
GRADE 05 MATHEMATICS	75	61	47	30	27	30	14	24	12	15	59	86.0	55.0	58
GRADE 05 SCIENCE AND TECH/ENG	80	53	39	20	41	33	19	34	2	13	59	92.8	N/A	N/A
GRADE 06 ENGLISH LANGUAGE ARTS	80	68	14	16	67	52	17	23	3	9	66	92.4	45.0	65
GRADE 06 MATHEMATICS	82	60	47	29	35	31	12	25	6	15	66	90.9	57.0	65
GRADE 07 ENGLISH LANGUAGE ARTS	88	72	11	11	76	61	11	21	1	7	72	95.8	50.5	72
GRADE 07 MATHEMATICS	50	50	14	17	36	33	32	26	18	24	72	75.3	31.0	71
GRADE 08 ENGLISH LANGUAGE ARTS	91	79	18	14	72	65	8	14	2	8	65	96.2	42.0	64
GRADE 08 MATHEMATICS	72	52	23	19	49	33	17	29	11	19	65	85.8	45.0	64
GRADE 08 SCIENCE AND TECH/ENG	74	42	8	4	66	38	23	41	3	18	65	89.2	N/A	N/A
ALL GRADES ENGLISH LANGUAGE ARTS	77	56	16	10	61	46	20	30	2	14	388	92.1	48.0	321
ALL GRADES MATHEMATICS	69	49	32	20	37	29	21	29	9	21	387	85.5	50.0	319
ALL GRADES SCIENCE AND TECH/ENG	77	36	23	8	54	28	21	40	2	24	124	90.9	N/A	N/A

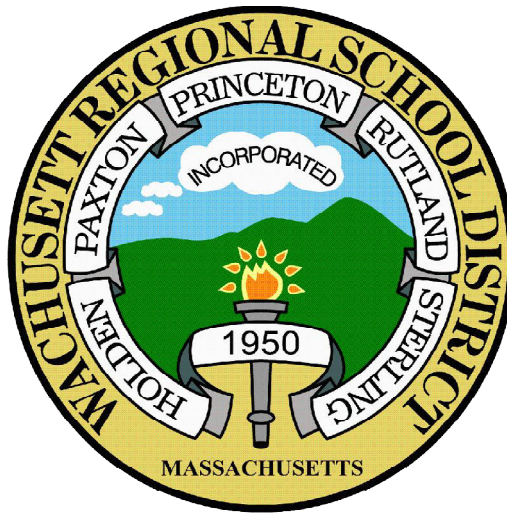
Thomas Prince School

Grade and Subject	Proficient or Higher		Advanced		Proficient		Needs Improvement		Warning/ Failing		Students Included	CPI	SGP	Included in SGP
	SCHOOL	STATE	SCHOOL	STATE	SCHOOL	STATE	SCHOOL	STATE	SCHOOL	STATE				
GRADE 03 READING	82	57	26	12	56	46	15	33	3	10	34	94.1	N/A	N/A
GRADE 03 MATHEMATICS	82	68	32	31	50	38	15	21	3	11	34	92.6	N/A	N/A
GRADE 04 ENGLISH LANGUAGE ARTS	63	54	18	13	45	41	34	33	3	13	38	87.5	65.0	37
GRADE 04 MATHEMATICS	66	52	29	20	37	32	29	36	5	12	38	87.5	73.0	37
GRADE 05 ENGLISH LANGUAGE ARTS	87	64	35	18	52	46	13	26	0	10	46	95.7	61.0	45
GRADE 05 MATHEMATICS	83	61	48	30	35	30	17	24	0	15	46	94.6	61.0	45
GRADE 05 SCIENCE AND TECH/ENG	89	53	46	20	43	33	11	34	0	13	46	96.7	N/A	N/A
GRADE 06 ENGLISH LANGUAGE ARTS	79	68	38	16	42	52	4	23	17	9	48	96.9	82.5	40
GRADE 06 MATHEMATICS	79	60	60	29	19	31	2	25	19	15	48	95.8	80.5	40
GRADE 07 ENGLISH LANGUAGE ARTS	82	72	11	11	71	61	7	21	11	7	45	95.0	47.0	39
GRADE 07 MATHEMATICS	69	50	29	17	40	33	13	26	18	24	45	89.4	51.0	39
GRADE 08 ENGLISH LANGUAGE ARTS	85	79	23	14	62	65	11	14	3	8	61	95.1	41.5	58
GRADE 08 MATHEMATICS	82	52	39	19	43	33	13	29	5	19	61	93.0	61.0	58
GRADE 08 SCIENCE AND TECH/ENG	72	42	10	4	62	38	23	41	5	18	61	89.8	N/A	N/A
ALL GRADES ENGLISH LANGUAGE ARTS	81	56	25	10	55	46	13	30	6	14	272	94.3	59.0	219
ALL GRADES MATHEMATICS	77	49	40	20	37	29	14	29	8	21	272	92.4	65.0	219
ALL GRADES SCIENCE AND TECH/ENG	79	36	25	8	54	28	18	40	3	24	107	92.8	N/A	N/A

Advanced Placement Performance Report – 2013-2014

Subject	Tests Taken	% Score 1-2	% Score 3-5
All Subjects	654	13.1	86.9
<Arts>	9		
Studio Art: Drawing	6		
Music Theory	3		
<English Language Arts>	97	13.4	86.6
English Lang/Comp	71	16.9	83.1
English Lit/Comp	26	3.8	96.2
<Foreign Languages>	6		
Spanish Lang	6		
<History and Social Science>	360	11.1	88.9
Economics: Macro	33	15.2	84.8
Economics: Micro	32	12.5	87.5
Govt & Pol: U.S.	30	13.3	86.7
History: European	14	7.1	92.9
History: U.S.	110	12.7	87.3
History: World	95	12.6	87.4
Psychology	46	0.0	100.0
<Math and Computer Science>	115	21.7	78.3
Calculus AB	53	18.9	81.1
Calculus BC	21	38.1	61.9
Computer Sci A	5		
Statistics	36	11.1	88.9
<Science and Technology>	67	11.9	88.1
Biology	35	17.1	82.9
Chemistry	14	7.1	92.9
Environmental Sci	18	5.6	94.4

Financial Reports



Enrollment and Required Net School Spending

FY 2015		FY2015 Foundation Enrollment	FY2015 Foundation Budget	FY2015 Net Minimum Contribution	FY2015 Chapter 70	FY2015 Required Net School Spending
Code	Member Name					
134	Holden	3,071	27,700,535	17,038,520	N/A	N/A
228	Paxton	708	6,384,413	4,282,288	N/A	N/A
241	Princeton	450	4,056,491	3,650,842	N/A	N/A
257	Rutland	1,613	14,549,513	6,610,818	N/A	N/A
282	Sterling	1,222	11,022,885	8,061,197	N/A	N/A
999	Total	7,064	63,713,837	39,643,665	24,988,920	64,632,585

Based upon Department of Education Chapter 70 Aid and Net School Spending Requirements 07/1/2014

FY 2014		FY2014 Foundation Enrollment	FY2014 Foundation Budget	FY2014 Net Minimum Contribution	FY2014 Chapter 70	FY2014 Required Net School Spending
Code	Member Name					
134	Holden	3,104	27,725,416	17,127,929	N/A	N/A
228	Paxton	700	6,251,474	4,239,534	N/A	N/A
241	Princeton	456	4,070,727	4,046,051	N/A	N/A
257	Rutland	1,641	14,658,039	6,470,503	N/A	N/A
282	Sterling	1,235	11,032,013	8,077,258	N/A	N/A
999	Total	7,136	63,737,669	39,961,275	24,731,804	64,693,079

Based upon Department of Education Chapter 70 Aid and Net School Spending Requirements 07/12/2013

FY 2013		FY2013 Foundation Enrollment	FY2013 Foundation Budget	FY2013 Net Minimum Contribution	FY2013 Chapter 70	FY2013 Required Net School Spending
Code	Member Name					
134	Holden	3,078	27,072,606	16,779,390	N/A	N/A
228	Paxton	693	6,094,704	4,170,010	N/A	N/A
241	Princeton	496	4,360,575	4,070,202	N/A	N/A
257	Rutland	1,643	14,453,876	6,201,473	N/A	N/A
282	Sterling	1,257	11,052,964	7,968,175	N/A	N/A
999	Total	7,167	63,034,725	39,189,250	24,301,041	63,490,291

Based upon Department of Education Chapter 70 Aid and Net School Spending Requirements 06/28/2012

FY15 Appropriation - Adopted 7/14/14

OPERATIONS APPROPRIATION	
PERSONNEL	
Salaries	\$ 50,626,097
Sub category subs & stipends	\$ 1,174,647
Employee Benefits & Insurance	\$ 12,261,251
PERSONNEL TOTAL	\$ 64,061,995
INSTRUCTIONAL SUPPORT - EQUIPMENT & TECHNOLOGY	
Instructional General Supplies	\$ 607,823
Instructional Technology	\$ 819,489
Instructional Materials	\$ 137,760
Instructional Services	\$ 669,460
INSTRUCTIONAL SUPPORT TOTAL	\$ 2,234,532
OPERATIONS & MAINTENANCE	
Custodial	\$ 226,199
Heating	\$ 1,187,595
Utilities	\$ 1,078,795
Grounds	\$ 400,198
Maintenance	\$ 437,198
OPERATIONS & MAINTENANCE TOTAL	\$ 3,329,985
PUPIL SERVICES	
Health Services	\$ 26,848
Athletics Activities	\$ 107,799
Student Activities	\$ 8,609
Other Expenses	\$ 21,661
PUPIL SERVICES TOTAL	\$ 164,917
SPECIAL EDUCATION TUITIONS	
Special Ed Tuitions - Other Schools	\$ 1,924,468
SPECIAL EDUCATION TUITIONS TOTAL	\$ 1,924,468
OTHER OPERATIONS COSTS	
Fixed Charges	\$ 58,067
Regular Ed Tuitions - Other Schools	\$ 1,068,098
OTHER OPERATIONS COSTS TOTAL	\$ 1,126,165
SUBTOTAL OPERATIONS APPROPRIATION	\$ 72,842,062
OTHER APPROPRIATION	
TRANSPORTATION	
REGULAR TRANSPORTATION	\$ 3,092,294
SPECIAL ED TRANSPORTATION	\$ 2,629,688
TRANSPORTATION TOTAL	\$ 5,721,982
DEBT SERVICE	
JEFFERSON ENVIRONMENTAL REMEDIATION / ECC REPAIR	\$ 96,150
WRHS APPROVED CAPITAL PROJECTS	\$ 2,519,404
DEBT SERVICE TOTAL	\$ 2,615,554
SUBTOTAL OTHER APPROPRIATION	\$ 8,337,536
TOTAL APPROPRIATION	\$ 81,179,598

Expenditures

	FY13 Actual	FY14 Appropriation	\$ Change	% Change	FY15 Appropriation	\$ Change	% Change
PERSONNEL							
Salaries	49,084,475	50,255,451	1,170,976		51,800,744	1,545,293	
Benefits & Insurance	12,420,571	12,736,235	315,664		12,261,251	(474,984)	
TOTAL	61,505,046	62,991,686	1,486,640	2.42%	64,061,995	1,070,309	1.70%
INSTRUCTIONAL SUPPORT							
General Supplies	359,256	449,254	89,998		607,823	158,569	
Technology	751,795	758,786	6,991		819,489	60,703	
Materials	90,398	99,390	8,992		137,760	38,370	
Services	537,615	637,581	99,966		669,460	31,879	
TOTAL	1,739,064	1,945,011	(695,011)	11.84%	2,234,532	289,521	14.89%
OPERATIONS & MAINTENANCE							
Custodial	195,705	173,628	(22,077)		226,199	52,571	
Heating	1,025,241	1,132,884	107,643		1,187,595	54,711	
Utilities	1,033,573	1,046,368	12,795		1,078,795	32,427	
Grounds	385,543	384,413	(1,130)		400,198	15,785	
Maintenance	410,774	299,835	(110,939)		437,198	137,363	
TOTAL	3,050,836	3,037,128	(13,708)	-0.45%	3,329,985	292,857	9.64%
PUPIL SERVICES							
Health Services	41,040	26,310	(14,730)		26,848	538	
Athletics Activities	16,570	105,644	89,074		107,799	2,155	
Student Activities	6,200	8,437	2,237		8,609	172	
Other Expenses	6,260	21,228	14,968		21,661	433	
TOTAL	70,070	161,619	91,549	130.65%	164,917	3,298	2.04%
SPECIAL ED TUITIONS	1,676,585	2,100,369	423,784	25.28%	1,924,468	(175,901)	-8.37%
OTHER OPERATIONS COSTS	1,407,762	1,536,836	129,074	9.17%	1,126,165	(410,671)	-26.72%
TRANSPORTATION	5,085,104	5,315,720	230,616	4.54%	5,721,982	406,262	7.64%
DEBT SERVICE	2,798,866	2,783,722	(15,144)	-0.54%	2,615,554	(168,168)	-6.04%
TOTAL APPROPRIATION	77,333,334	79,872,089	2,538,755	3.28%	81,179,596	1,307,507	1.64%
FOUNDATION ENROLLMENT	7,167	7,136	(31)	-0.43%	7,064	(72)	-1.01%

Local Revenues

				Actual FY13	Actual FY14	Adopted FY15
MINIMUM LOCAL CONTRIBUTION						
	FY13	FY14	FY15	FY13	FY14	FY15
Holden	2.02%	2.08%	-0.52%	16,779,390	17,127,929	17,038,520
Paxton	1.53%	1.67%	1.01%	4,170,010	4,239,534	4,282,288
Princeton	0.41%	-0.59%	-9.77%	4,070,202	4,046,051	3,650,842
Rutland	6.30%	4.34%	2.17%	6,201,473	6,470,503	6,610,818
Sterling	2.54%	1.37%	-0.20%	7,968,175	8,077,258	8,061,197
% Change from previous year						
Total Minimum Local Contribution				39,189,250	39,961,275	39,643,665
OPERATIONS ASSESSMENT						
	FY13	FY14	FY15	FY13	FY14	FY15
Holden	43.14%	43.77%	43.70%	2,473,630	2,531,676	2,861,954
Paxton	9.65%	9.84%	10.06%	553,430	569,210	658,776
Princeton	7.10%	6.36%	6.30%	407,044	367,565	412,869
Rutland	22.98%	23.13%	22.93%	1,317,477	1,337,684	1,501,755
Sterling	17.13%	16.90%	17.00%	982,133	977,264	1,113,385
Based upon prior year October 1 enrollment						
Total Operations Assessment				5,733,714	5,783,399	6,548,739
TRANSPORTATION ASSESSMENT						
	FY13	FY14	FY15	FY13	FY14	FY15
Holden	43.14%	43.77%	43.70%	1,247,060	967,557	898,257
Paxton	9.65%	9.84%	10.06%	279,007	217,541	206,764
Princeton	7.10%	6.36%	6.30%	205,208	140,476	129,584
Rutland	22.98%	23.13%	22.93%	664,195	511,237	471,343
Sterling	17.13%	16.90%	17.00%	495,134	373,491	349,449
Based upon prior year October 1 enrollment						
Total Transportation Assessment				2,890,604	2,210,302	2,055,397

Local Revenues Continued

				Actual FY13	Actual FY14	Adopted FY15
LONG-TERM DEBT REPAYMENT ASSESSMENT						
	FY13	FY14	FY15	FY13	FY14	FY15
Holden	43.14%	43.77%	43.70%	47,926	42,873	42,020
Paxton	9.65%	9.84%	10.06%	10,723	9,638	9,672
Princeton	7.10%	6.36%	6.30%	7,886	6,230	6,062
Rutland	22.98%	23.13%	22.93%	25,526	22,656	22,049
Sterling	17.13%	16.90%	17.00%	19,029	16,554	16,347
Based upon prior year October 1 enrollment						
Total Long-Term Debt Repayment Assessments				111,090	97,950	96,150
LONG-TERM DEBT REPAYMENT ASSESSMENT - HIGH SCHOOL						
	FY13	FY14	FY15	FY13	FY14	FY15
Holden	44.10%	45.07%	43.31%	1,190,179	1,210,477	1,091,215
Paxton	8.81%	8.41%	9.42%	237,794	225,873	237,221
Princeton	8.68%	7.40%	7.29%	234,173	198,747	183,694
Rutland	22.05%	23.69%	23.66%	595,089	636,259	596,093
Sterling	16.37%	15.43%	16.32%	441,791	414,415	411,182
Based upon prior year October 1 enrollment at WRHS						
Total Long-Term Debt Repayment Assessments				2,699,026	2,685,772	2,519,404
LOCAL REVENUE BY TOWN						
	FY13	FY14	FY15	FY13	FY14	FY15
Holden	4.59%	0.65%	0.24%	21,738,185	21,880,512	21,931,966
Paxton	3.77%	0.21%	2.53%	5,250,964	5,261,797	5,394,721
Princeton	1.65%	-3.36%	-7.90%	4,924,513	4,759,069	4,383,051
Rutland	9.14%	1.98%	2.49%	8,803,760	8,978,339	9,202,057
Sterling	4.56%	-0.48%	0.94%	9,906,262	9,858,981	9,951,561
% Change from previous year						
Total Local Revenue by Town				50,623,684	50,738,698	50,863,355
TOTAL LOCAL REVENUE				50,623,684	50,738,698	50,863,355

State Aid and Other Revenue

STATE AID

				Actual FY13	Actual FY14	Adopted FY15
CHAPTER 70 AID						
	FY13	FY14	FY15	FY13	FY14	FY15
	8.54%	1.77%	1.04%	24,301,041	24,731,804	24,988,920
% Change from previous year						
TOTAL CHAPTER 70 AID				24,301,041	24,731,804	24,988,920
CHAPTER 71 TRANSPORTATION AID						
	FY13	FY14	FY15	FY13	FY14	FY15
	10.76%	38.73%	19.73%	2,207,456	3,062,387	3,666,586
Percent change from previous year						
TOTAL CHAPTER 71 TRANSPORTATION AID				2,207,456	3,062,387	3,666,586
TOTAL STATE AID REVENUE				26,508,497	27,794,191	28,655,506

OTHER REVENUE

	Actual FY13	Actual FY14	Adopted FY15
OTHER REVENUE			
	FY13	FY14	FY15
District Revenues for Operations	439,687	380,000	759,669
Excess & Deficiency (E&D)	0	0	850,000
Charter School Reimbursement *	70,651	60,301	51,068
School Choice **	1,008,662	1,202,800	1,314,200
Transportation Reimbursement	2,207,456	3,062,387	3,666,586
TOTAL OTHER REVENUE	3,726,456	4,705,488	6,641,523

FY 2015 Expense Budget Allocation Summary

All Amounts in Thousands

56 Region Based, 57 School Based, 58 Needs Based

DEPT	OBJ	CAT	DESCRIPTION	WRH	DAW	MOU	MAY	DAV	PAX	PRI	NAQ	CEN	GLEN	CHO	HOU	ECC	DIST	COF	FY 2015
Subtotal				0.0	0.0	0.2	0.0	0.0	0.0	0.0	0.2	0.0	0.0	0.0	0.0	0.0	0.0	0.0	0.4
300	School Committee																		0.0
	56	301	Superintendent Office	0.0	0.0	0.0	0.0	0.0	0.0	0.0	0.0	0.0	0.0	0.0	0.0	0.0	0.0	572.4	572.4
	56	302	Districtwide Administration	0.0	0.0	0.0	0.0	0.0	0.0	0.0	0.0	0.0	0.0	0.0	0.0	0.0	0.0	263.7	263.7
	56	303	Business & Finance	0.0	0.0	0.0	0.0	0.0	0.0	0.0	0.0	0.0	0.0	0.0	0.0	0.0	0.0	348.5	348.5
	56	304	Human Resources	0.0	0.0	0.0	0.0	0.0	0.0	0.0	0.0	0.0	0.0	0.0	0.0	0.0	0.0	223.9	223.9
	56	306	Pupil Personnel	0.0	0.0	0.0	0.0	0.0	0.0	0.0	0.0	0.0	0.0	0.0	0.0	0.0	0.0	106.8	106.8
	56	390	Misc Stipend	0.0	0.0	0.0	0.0	0.0	0.0	0.0	0.0	0.0	0.0	0.0	0.0	0.0	0.0	10.6	10.6
Subtotal				0.0	0.0	0.0	0.0	0.0	0.0	0.0	0.0	0.0	0.0	0.0	0.0	0.0	0.0	1,525.9	1,525.9
307	Technology																		0.0
	56	105	Technology Associate/Asst	53.1	0.0	0.0	0.0	0.0	0.0	0.0	0.0	0.0	0.0	0.0	0.0	0.0	310.0	0.0	363.1
	56	261	Student	0.0	0.0	0.0	0.0	0.0	0.0	0.0	0.0	0.0	0.0	0.0	0.0	0.0	3.1	0.0	3.1
Subtotal				53.1	0.0	0.0	0.0	0.0	0.0	0.0	0.0	0.0	0.0	0.0	0.0	0.0	313.1	0.0	366.2
309	Custodial/Maintenance																		0.0
	56	103	Admin/Specialist	75.0	0.0	0.0	0.0	0.0	0.0	0.0	0.0	0.0	0.0	0.0	0.0	0.0	161.6	0.0	236.6
	56	209	Custodial Maintenance Work	747.3	170.8	246.0	148.2	144.7	156.4	112.9	125.5	113.4	151.5	128.7	128.7	23.2	0.0	25.5	2,422.7
	56	309	Substitute Custodian	6.1	1.2	4.5	1.7	2.2	0.1	4.7	1.6	2.5	2.0	1.0	1.0	0.0	0.0	2.0	30.6
	56	352	Custodial Overtime	7.6	1.2	1.5	1.0	1.5	0.5	1.0	1.0	1.2	1.5	0.7	0.7	0.0	0.0	0.7	20.1
	56	353	Custodial Building Check	5.7	0.5	0.3	0.2	0.2	0.9	0.0	0.2	0.2	0.3	0.5	0.4	0.0	0.0	0.0	9.4
	56	354	Custodial Summer	3.3	2.4	4.2	2.7	2.1	2.3	0.0	4.6	4.2	4.8	0.9	0.0	6.0	0.0	1.3	38.8
Subtotal				845.0	176.1	256.5	153.8	150.7	160.2	118.6	132.9	121.5	160.1	131.8	130.8	29.2	161.6	29.5	2,758.2
420	Student Activities General Fund																		0.0
	56	363	Student Activity Advisors	45.2	0.0	1.8	0.0	0.0	1.5	1.7	0.0	1.7	0.0	1.7	0.0	0.0	0.0	0.0	53.6
Subtotal				45.2	0.0	1.8	0.0	0.0	1.5	1.7	0.0	1.7	0.0	1.7	0.0	0.0	0.0	0.0	53.6
TOTAL SALARIES & STIPENDS				14,369.9	2,711.1	3,889.5	2,600.5	2,674.7	2,982.0	2,625.4	2,719.4	2,538.8	3,049.0	2,510.0	2,253.7	1,628.5	3,583.9	1,555.4	51,800.7
EMPLOYEE BENEFITS & INSURANCE																			0.0
300	Benefits & Insurance																		0.0
	56	309	Uniform Allowance	1.0	0.2	0.4	0.4	0.4	0.1	0.1	0.2	0.2	0.3	0.0	0.3	0.1	0.0	0.1	3.8
	56	395	Benefits - Other	7.2	0.0	3.0	0.0	0.0	0.9	1.2	3.5	0.0	3.6	0.0	0.0	3.4	3.7	0.0	26.5
	56	800	Health Insurance - Employee	0.0	0.0	0.0	0.0	0.0	0.0	0.0	0.0	0.0	0.0	0.0	0.0	0.0	0.0	7,263.4	7,263.4
	56	801	Retiree Health Insurance - District	0.0	0.0	0.0	0.0	0.0	0.0	0.0	0.0	0.0	0.0	0.0	0.0	0.0	0.0	2,030.6	2,030.6
	56	865	Retiree Health Insurance - Town	0.0	0.0	0.0	0.0	0.0	0.0	0.0	0.0	0.0	0.0	0.0	0.0	0.0	0.0	207.3	207.3
	56	803	Long Term Disability Reimbursement	0.0	0.0	0.0	0.0	0.0	0.0	0.0	0.0	0.0	0.0	0.0	0.0	0.0	0.0	130.5	130.5
	56	805	Medicare	0.0	0.0	0.0	0.0	0.0	0.0	0.0	0.0	0.0	0.0	0.0	0.0	0.0	0.0	711.9	711.9
	56	810	Life Insurance	0.0	0.0	0.0	0.0	0.0	0.0	0.0	0.0	0.0	0.0	0.0	0.0	0.0	0.0	17.0	17.0
	56	812	Unemployment Insurance	0.0	0.0	0.0	0.0	0.0	0.0	0.0	0.0	0.0	0.0	0.0	0.0	0.0	0.0	88.7	88.7
	56	815	Workers Compensation	0.0	0.0	0.0	0.0	0.0	0.0	0.0	0.0	0.0	0.0	0.0	0.0	0.0	0.0	284.9	284.9
	56	850	General Liability Insurance	0.0	0.0	0.0	0.0	0.0	0.0	0.0	0.0	0.0	0.0	0.0	0.0	0.0	0.0	197.9	197.9
	56	860	Retirement Benefits (WRRS)	0.0	0.0	0.0	0.0	0.0	0.0	0.0	0.0	0.0	0.0	0.0	0.0	0.0	0.0	1,298.7	1,298.7
Subtotal				8.2	0.2	3.4	0.4	0.4	1.0	1.3	3.7	0.2	3.9	0.0	0.3	3.5	3.7	12,231.0	12,261.2
TOTAL EMPLOYEE BENEFITS & INSURANCE				8.2	0.2	3.4	0.4	0.4	1.0	1.3	3.7	0.2	3.9	0.0	0.3	3.5	3.7	12,231.0	12,261.2
INSTRUCTIONAL SUPPORT/EQUIPMENT & TECHNOLOGY																			0.0
100	Instructional Support - Regular Education																		0.0
	57	400	Supplies & Expense	12.4	22.7	19.0	25.2	31.5	17.1	12.9	9.0	8.8	15.7	10.3	15.9	0.0	0.0	0.0	200.5
	57	450	Equipment & Furniture	3.7	0.7	1.7	0.0	0.4	1.2	0.0	0.0	1.5	0.0	0.3	0.0	0.0	0.0	0.0	9.5
	57	455	Equipment Repair	2.7	0.3	0.0	0.0	0.0	0.0	0.0	0.0	0.0	0.0	0.0	0.0	0.0	0.0	0.0	3.0
	57	480	Textbooks	15.8	3.4	5.0	1.0	1.0	5.1	1.8	2.5	2.2	2.3	1.0	6.4	0.0	24.2	0.0	71.7

FY 2015 Expense Budget Allocation Summary

All Amounts in Thousands

56 Region Based, 57 School Based, 58 Needs Based

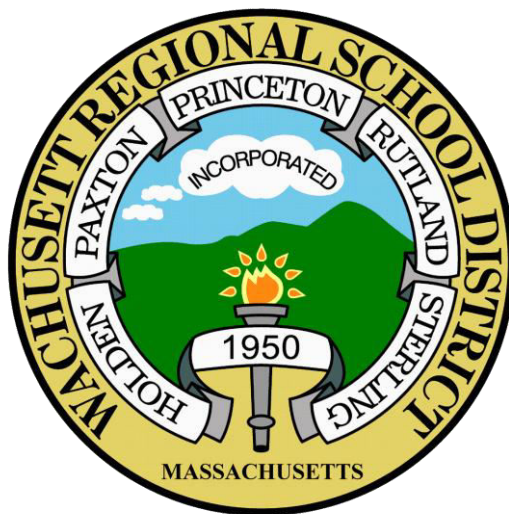
DEPT	OBJ	CAT	DESCRIPTION	WRH	DAW	MOU	MAY	DAV	PAX	PRI	NAQ	CEN	GLEN	CHO	HOU	ECC	DIST	COF	FY 2015
	56	300	School Committee	0.0	0.0	0.0	0.0	0.0	0.0	0.0	0.0	0.0	0.0	0.0	0.0	0.0	0.0	47.6	47.6
	56	301	Superintendent of Schools	0.0	0.0	0.0	0.0	0.0	0.0	0.0	0.0	0.0	0.0	0.0	0.0	0.0	0.0	19.6	19.6
	56	302	Districtwide Administration	0.0	0.0	0.0	0.0	0.0	0.0	0.0	0.0	0.0	0.0	0.0	0.0	0.0	0.0	31.2	31.2
	56	303	Business & Finance	0.0	0.0	0.0	0.0	0.0	0.0	0.0	0.0	0.0	0.0	0.0	0.0	0.0	0.0	98.3	98.3
	56	304	Human Resources	0.0	0.0	0.0	0.0	0.0	0.0	0.0	0.0	0.0	0.0	0.0	0.0	0.0	0.0	33.1	33.1
	56	306	Pupil Personnel	0.0	0.0	0.0	0.0	0.0	0.0	0.0	0.0	0.0	0.0	0.0	0.0	0.0	2.0	1.0	3.0
			Subtotal	0.0	0.0	0.0	0.0	0.0	0.0	0.0	0.0	0.0	0.0	0.0	0.0	0.0	2.0	230.8	232.8
307			Technology																0.0
	57	416	Networking & Telecommunication	0.0	0.0	0.0	0.0	0.0	0.0	0.0	0.0	0.0	0.0	0.0	0.0	0.0	95.3	0.0	95.3
	57	451	Technology Software	0.2	0.0	0.0	0.0	0.0	0.0	0.0	0.0	0.0	0.0	0.0	0.0	0.0	57.3	156.2	213.7
	57	452	Technology Hardware	25.0	0.0	0.0	0.0	0.0	1.0	0.0	0.0	0.0	0.0	0.0	0.0	0.0	7.5	100.9	134.4
	57	456	Technology -Supplies & Expense	0.0	0.0	0.0	0.0	0.0	0.0	0.0	0.0	0.0	0.0	0.0	0.0	0.0	0.0	0.4	0.4
	57	457	Technology -Repairs & Services	0.0	0.5	0.0	0.0	0.0	0.0	0.0	0.0	0.0	2.5	0.0	0.0	0.0	0.0	1.8	4.8
			Subtotal	25.2	0.5	0.0	0.0	0.0	1.0	0.0	0.0	0.0	2.5	0.0	0.0	0.0	160.1	259.3	448.6
390			Fixed Charges																0.0
	56	453	Copier Leases	24.0	6.8	12.7	10.8	10.1	6.6	5.3	6.8	12.8	10.1	12.8	13.2	3.0	0.0	6.2	141.2
	56	452	Computer Hardware	0.0	0.0	0.0	0.0	0.0	0.0	0.0	0.0	0.0	0.0	0.0	0.0	0.0	85.2	0.0	85.2
	56	555	Maintenance Equipment	0.0	0.0	0.0	0.0	0.0	0.0	0.0	0.0	0.0	0.0	0.0	0.0	0.0	0.0	0.0	0.0
			Subtotal	24.0	6.8	12.7	10.8	10.1	6.6	5.3	6.8	12.8	10.1	12.8	13.2	3.0	85.2	6.2	226.4
400			Alternative Education																0.0
	58	400	General Supplies	3.0	0.0	0.0	0.0	0.0	0.0	0.0	0.0	0.0	0.0	0.0	0.0	0.0	0.0	0.0	3.0
			Subtotal	3.0	0.0	0.0	0.0	0.0	0.0	0.0	0.0	0.0	0.0	0.0	0.0	0.0	0.0	0.0	3.0
401			Audio Visual																0.0
	57	400	Audio Visual Supplies & Expense	3.0	0.0	0.0	0.0	0.0	0.0	2.0	0.0	0.5	0.0	0.0	0.2	0.0	0.0	0.0	5.7
	58	450	Audio Visual Equipment & Furnitu	0.0	0.0	0.0	0.0	0.0	0.0	0.0	0.0	0.0	0.0	0.0	0.0	0.0	0.0	0.0	0.0
	57	455	Audio Visual Equipment Repair	0.0	0.0	0.0	0.0	0.0	0.0	0.0	0.0	0.0	0.0	0.0	0.0	0.0	0.0	0.0	0.0
			Subtotal	3.0	0.0	0.0	0.0	0.0	0.0	2.0	0.0	0.5	0.0	0.0	0.2	0.0	0.0	0.0	5.7
			Department Supplies & Expenses																0.0
	58	402	Art Supplies & Textbooks	11.9	0.0	0.0	0.0	0.0	0.0	0.0	0.0	0.0	0.0	0.0	0.0	0.0	0.0	0.0	11.9
	57	403	Business Education Supplies & T	1.5	0.0	0.0	0.0	0.0	0.0	0.0	0.0	0.0	0.0	0.0	0.0	0.0	0.0	0.0	1.5
	57	405	English Supplies & Textbooks	6.5	0.0	0.0	0.0	0.0	0.0	0.0	0.0	0.0	0.0	0.0	0.0	0.0	0.0	0.0	6.5
	57	406	Foreign Language Supplies & Te	6.9	0.0	0.0	0.0	0.0	0.0	0.0	0.0	0.0	0.0	0.0	0.0	0.0	0.0	0.0	6.9
	58	407	Life Study Supplies	1.4	0.0	0.0	0.0	0.0	0.0	0.0	0.0	0.0	0.0	0.0	0.0	0.0	0.0	0.0	1.4
	57	408	Math Supplies & Textbooks	2.0	0.0	0.0	0.0	0.0	0.0	0.0	0.0	0.0	0.0	0.0	0.0	0.0	0.0	0.0	2.0
	58	409	Music Supplies	1.3	0.0	0.0	0.0	0.0	0.0	0.0	0.0	0.0	0.0	0.0	0.0	0.0	0.0	0.0	1.3
	58	410	Physical Education Supplies	0.6	0.0	0.0	0.0	0.0	0.0	0.0	0.0	0.0	0.0	0.0	0.0	0.0	0.0	0.0	0.6
	57	411	Science Supplies & Textbooks	7.8	0.0	0.0	0.0	0.0	0.0	0.0	0.0	0.0	0.0	0.0	0.0	0.0	0.0	0.0	7.8
	57	412	Social Studies Supplies & Textbo	11.1	0.0	0.0	0.0	0.0	0.0	0.0	0.0	0.0	0.0	0.0	0.0	0.0	0.0	0.0	11.1
	57	414	Vocational Supplies & Textbooks	3.8	0.0	0.0	0.0	0.0	0.0	0.0	0.0	0.0	0.0	0.0	0.0	0.0	0.0	0.0	3.8
	58	463	Technology Education Supplies	1.4	0.0	0.0	0.0	0.0	0.0	0.0	0.0	0.0	0.0	0.0	0.0	0.0	0.0	0.0	1.4
			Subtotal	56.2	0.0	0.0	0.0	0.0	0.0	0.0	0.0	0.0	0.0	0.0	0.0	0.0	0.0	0.0	56.2
610			Testing & Assessment																0.0
	58	400	General Supplies	3.5	0.1	3.5	0.1	0.1	0.7	0.1	1.3	2.5	1.5	0.1	0.1	0.0	0.0	0.0	13.6
			Subtotal	3.5	0.1	3.5	0.1	0.1	0.7	0.1	1.3	2.5	1.5	0.1	0.1	0.0	0.0	0.0	13.6
TOTAL INSTRUCTIONAL SUPPORT/EQUIPMENT &				306.5	55.0	67.0	56.5	56.2	49.2	75.0	142.9	77.1	46.7	74.5	57.9	27.9	642.9	268.8	2,234.5
OPERATIONS & MAINTENANCE																			0.0
309			Custodial/Maintenance																0.0
	57	500	Supplies & Expense	26.2	11.0	13.8	12.4	19.6	15.7	12.0	13.8	9.3	11.4	9.0	11.0	2.5	0.0	16.2	183.9

FY 2015 Expense Budget Allocation Summary

All Amounts in Thousands

56 Region Based, 57 School Based, 58 Needs Based

DEPT	OBJ	CAT	DESCRIPTION	WRH	DAW	MOU	MAY	DAV	PAX	PRI	NAQ	CEN	GLEN	CHO	HOU	ECC	DIST	COF	FY 2015	
Subtotal				0.0	0.0	0.0	0.0	0.0	0.0	0.0	0.0	0.0	0.0	0.0	0.0	0.0	0.0	33.1	33.1	
420	Student Activities General Fund																		0.0	
	57	400	Student Activities/Supplies & Exp	4.5	0.4	0.0	0.0	0.0	2.0	0.0	0.0	0.0	0.0	0.0	0.0	0.0	0.0	0.0	6.9	
	57	405	Student Activities/Graduation	0.0	0.0	0.0	0.0	0.0	1.5	1.2	0.0	0.0	0.0	0.0	0.0	0.0	0.0	0.0	2.7	
	57	615	Student Training	0.0	0.0	0.0	0.0	0.0	0.0	0.0	0.0	0.0	0.0	0.0	0.0	0.0	0.0	0.0	0.0	
	57	960	Student Activities/Transportation	0.0	0.0	0.0	0.0	0.0	0.0	0.0	0.0	0.0	0.0	0.0	0.0	0.0	0.0	0.0	0.0	
	58	820	Student Insurance	0.0	0.0	0.0	0.0	0.0	0.0	0.0	0.0	0.0	0.0	0.0	0.0	0.0	0.0	0.0	0.0	
Subtotal				4.5	0.4	0.0	0.0	0.0	3.5	1.2	0.0	0.0	0.0	0.0	0.0	0.0	0.0	0.0	9.6	
TOTAL PUPIL SERVICES				76.0	3.9	5.5	1.9	3.0	7.0	5.7	3.9	7.7	2.0	7.1	2.7	0.0	2.1	36.4	164.9	
																			0.0	
SUB-TOTAL OPERATIONS APPROPRIATION				15,522.9	2,896.8	4,261.6	2,854.6	2,929.1	3,294.1	2,951.5	3,081.2	2,882.7	3,315.1	2,779.7	2,506.8	1,664.4	4,243.1	14,268.3	69,791.2	
																			0.0	
SPECIAL EDUCATION TUITIONS																			0.0	
	Tuition - Other Schools																		0.0	
	56	970	Tuition-Public	0.0	0.0	0.0	0.0	0.0	0.0	0.0	0.0	0.0	0.0	0.0	0.0	0.0	694.8	0.0	694.8	
	56	970	Tuition-Public	0.0	0.0	0.0	0.0	0.0	0.0	0.0	0.0	0.0	0.0	0.0	0.0	0.0	9.3	0.0	9.3	
	56	971	Tuition-Public - Summer	0.0	0.0	0.0	0.0	0.0	0.0	0.0	0.0	0.0	0.0	0.0	0.0	0.0	49.4	0.0	49.4	
	56	972	Tuition-Private	0.0	0.0	0.0	0.0	0.0	0.0	0.0	0.0	0.0	0.0	0.0	0.0	0.0	1,009.4	0.0	1,009.4	
	56	973	Tuition-Private - Summer	0.0	0.0	0.0	0.0	0.0	0.0	0.0	0.0	0.0	0.0	0.0	0.0	0.0	13.3	0.0	13.3	
	56	974	Tuition-Private - OOS	0.0	0.0	0.0	0.0	0.0	0.0	0.0	0.0	0.0	0.0	0.0	0.0	0.0	0.0	0.0	0.0	
	56	976	Tuition-Collaborative	0.0	0.0	0.0	0.0	0.0	0.0	0.0	0.0	0.0	0.0	0.0	0.0	0.0	0.0	0.0	0.0	
	56	977	Tuition-Collaborative	0.0	0.0	0.0	0.0	0.0	0.0	0.0	0.0	0.0	0.0	0.0	0.0	0.0	148.3	0.0	148.3	
Subtotal				0.0	0.0	0.0	0.0	0.0	0.0	0.0	0.0	0.0	0.0	0.0	0.0	1,924.5	0.0	1,924.5		
TOTAL SPECIAL EDUCATION TUITIONS				0.0	0.0	0.0	0.0	0.0	0.0	0.0	0.0	0.0	0.0	0.0	0.0	0.0	1,924.5	0.0	1,924.5	
OTHER OPERATING COSTS																			0.0	
	56	784	RAN Interest	0.0	0.0	0.0	0.0	0.0	0.0	0.0	0.0	0.0	0.0	0.0	0.0	0.0	27.1	0.0	27.1	
	56	975	School Choice Assessment	0.0	0.0	0.0	0.0	0.0	0.0	0.0	0.0	0.0	0.0	0.0	0.0	0.0	618.9	0.0	618.9	
	56	976	Charter School Assessment	0.0	0.0	0.0	0.0	0.0	0.0	0.0	0.0	0.0	0.0	0.0	0.0	0.0	480.2	0.0	480.2	
Subtotal				0.0	0.0	0.0	0.0	0.0	0.0	0.0	0.0	0.0	0.0	0.0	0.0	0.0	1,126.2	0.0	1,126.2	
TOTAL OTHER COSTS				0.0	0.0	0.0	0.0	0.0	0.0	0.0	0.0	0.0	0.0	0.0	0.0	0.0	0.0	2,225.3	0.0	2,225.3
TRANSPORTATION																			0.0	
	56	960	Regular Ed	0.0	0.0	0.0	0.0	0.0	0.0	0.0	0.0	0.0	0.0	0.0	0.0	0.0	3,092.3	0.0	3,092.3	
	56	963	Special Education	0.0	0.0	0.0	0.0	0.0	0.0	0.0	0.0	0.0	0.0	0.0	0.0	0.0	2,077.7	0.0	2,077.7	
	56	964	Special Education - IEP	0.0	0.0	0.0	0.0	0.0	0.0	0.0	0.0	0.0	0.0	0.0	0.0	0.0	552.0	0.0	552.0	
TOTAL TRANSPORTATION				0.0	0.0	0.0	0.0	0.0	0.0	0.0	0.0	0.0	0.0	0.0	0.0	0.0	5,722.0	0.0	5,722.0	
CAPITAL PROJECT DEBT SERVICE																			0.0	
	56	782	Bond Debt Service - Interest	0.0	0.0	0.0	0.0	0.0	0.0	0.0	0.0	0.0	0.0	0.0	0.0	0.0	0.0	0.0	0.0	
	56	782	Bond Debt Service - Principal	0.0	0.0	0.0	0.0	0.0	0.0	0.0	0.0	0.0	0.0	0.0	0.0	0.0	2,615.6	0.0	2,615.6	
TOTAL CAPITAL PROJECT DEBT SERVICE				0.0	0.0	0.0	0.0	0.0	0.0	0.0	0.0	0.0	0.0	0.0	0.0	0.0	2,615.6	0.0	2,615.6	
																			0.0	
TOTAL SCHOOL COMMITTEE APPROPRIATION				15,522.9	2,896.8	4,261.6	2,854.6	2,929.1	3,294.1	2,951.5	3,081.2	2,882.7	3,315.1	2,779.7	2,506.8	1,664.4	16,730.5	14,268.3	82,278.6	



2014